



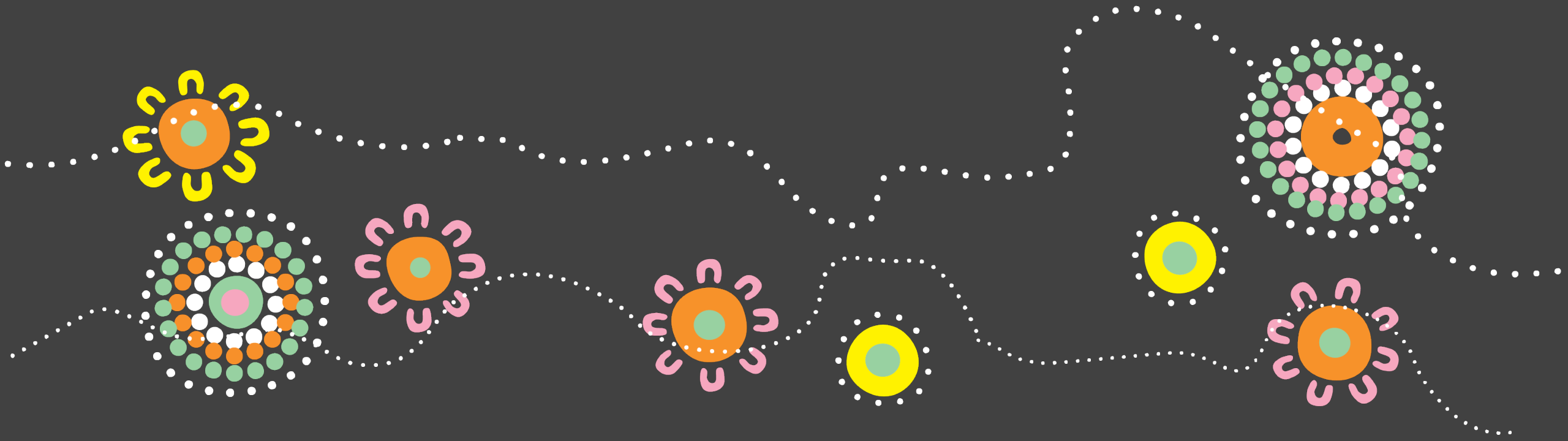
Creative design: Refocusing our efforts on growing First Nations evaluators



Lena Etuk
Research & Evaluation
Director, CIRCA



Dr Squirrel Main
Evaluation Manager, PRF



Acknowledgement of Country

We acknowledge Aboriginal and Torres Strait Islander peoples as the Traditional Custodians of the lands and waters in which we work and the knowledge-holders of the oldest continuous cultures in the world. We pay our respects to Elders past and present.



Introductions



1

Name & where you are from

2

Your organisation

3

Connection to this topic

AWRAE Training Project - background

Pilot program of the Aboriginal Women's Research Assistant and Evaluation (AWRAE) Training Project:

- 13-week training course for Aboriginal women, teaching them about research and evaluation
- Was implemented by ABC Foundation, Clear Horizon, and other partners with funding from the Paul Ramsay Foundation
- Held in Western Australia
- 8 women participated
- Core curriculum (3 months):
 - Introduction to research and evaluation
 - Understanding of political and cultural issues affecting research and evaluation
 - How to conduct a literature review
 - Preparing research and evaluation questions
 - Developing a theory of change/program logic
 - Developing research and evaluation questions and tools
 - How to manage a research or evaluation project
 - Doing data collection
 - Analysis of data
 - Sharing findings
 - Writing short reports
 - How to advocate for doing evaluation and research.
- Following the training, the program focused on work placements and implementation of community-based research projects by the women over the ensuing seven weeks.

CIRCA's evaluation scope & methods

Key evaluation questions:

- How was the project delivered? What key barriers and enablers emerged, what was effective, and what requires redesign? (Implementation)
 - Readiness
 - Reach
 - Format
 - Implementation
 - Acceptability
 - Fidelity
- What were the project's initial outcomes for participants? What were the key barriers to or avenues for achieving initial outcomes? (Immediate Outcomes)
 - Knowledge & skill
 - Confidence
 - Aspiration
 - Attitude

Methodology:

- Phone & Zoom interviews and focus group with all implementation team members
- In-person interviews with 7 project participants

Learnings from the pilot

Overall:

- We found the pilot encountered some implementation challenges. Despite the challenges, the women who completed the program reported improvements to their knowledge, skills, confidence, aspirations, and attitudes toward and about research and evaluation.



Recommendations

Recruitment

Material
resources

Human
resources

Content &
training

Implementation

Learnings from the pilot



Recommendations

Recruitment

- Allow for more than one month
- Criteria & Screening
- Provide a program outline and clear explanation of the program

Material resources

Human resources

Content & training

Implementation

Discussion: What recruitment advice would you have?

Learnings from the pilot



Recommendations

Recruitment

- Allow for more than one month
- Criteria & Screening
- Provide a program outline and clear explanation of the program

Material resources

- Resource readiness
- Food & drink
- Appropriate room

Human resources

Content & training

Implementation

Discussion: What would the ideal 'learning room' look like?

Learnings from the pilot

Recommendations

Recruitment

- Allow for more than one month
- Criteria & Screening
- Provide a program outline and clear explanation of the program

Material resources

- Resource readiness
- Food & drink
- Appropriate room

Human resources

- Advisory group
- Clear PDs, roles
- Aboriginal research experts needed

Content & training

Implementation

Discussion: How would you keep debrief sessions engaging?

Learnings from the pilot

Recommendations

Recruitment

- Allow for more than one month
- Criteria & Screening
- Provide a program outline and clear explanation of the program

Material resources

- Resource readiness
- Food & drink
- Appropriate room

Human resources

- Advisory group
- Clear PDs, roles
- Aboriginal research experts needed

Content & training

- Relevant examples
- Ongoing support
- Flexible attendance

Implementation

Discussion: How might you support attendance?

Learnings from the pilot

Recommendations

Recruitment

- Allow for more than one month
- Criteria & Screening
- Provide a program outline and clear explanation of the program

Material resources

- Resource readiness
- Food & drink
- Appropriate room

Human resources

- Advisory group
- Clear PDs, roles
- Aboriginal research experts needed

Content & training

- Relevant examples
- Ongoing support
- Flexible attendance

Implementation

- Early community engagement
- IP & contracts
- Cultural safety protocols embedded, understood, and constantly revisited

Discussion: In your experience, what problems might you foresee with implementation?

Time to dream big!

- Based on what we've shared and your own knowledge, how would you go about increasing the supply of Aboriginal and Torres Strait Islander evaluators in remote communities?



We're the experts in culturally sensitive research, policy and evaluation

Our team offers insights derived from 20+ years of experience working with diverse communities and Aboriginal and Torres Strait Islander communities in remote, rural and urban settings.

We speak more than 50 languages. We'll make sure your questions are heard. You'll trust in our methods and value the clarity our research brings.

 +61 2 8585 1313

 info@circaresearch.com.au

 16 Eveleigh St, Redfern NSW 2016