



**HANDS UP
MALLEE**

Through the lens of community

Inclusive, Useable and Accessible Measurement, Evaluation & Learning
with cross-sector partners, families & youth.

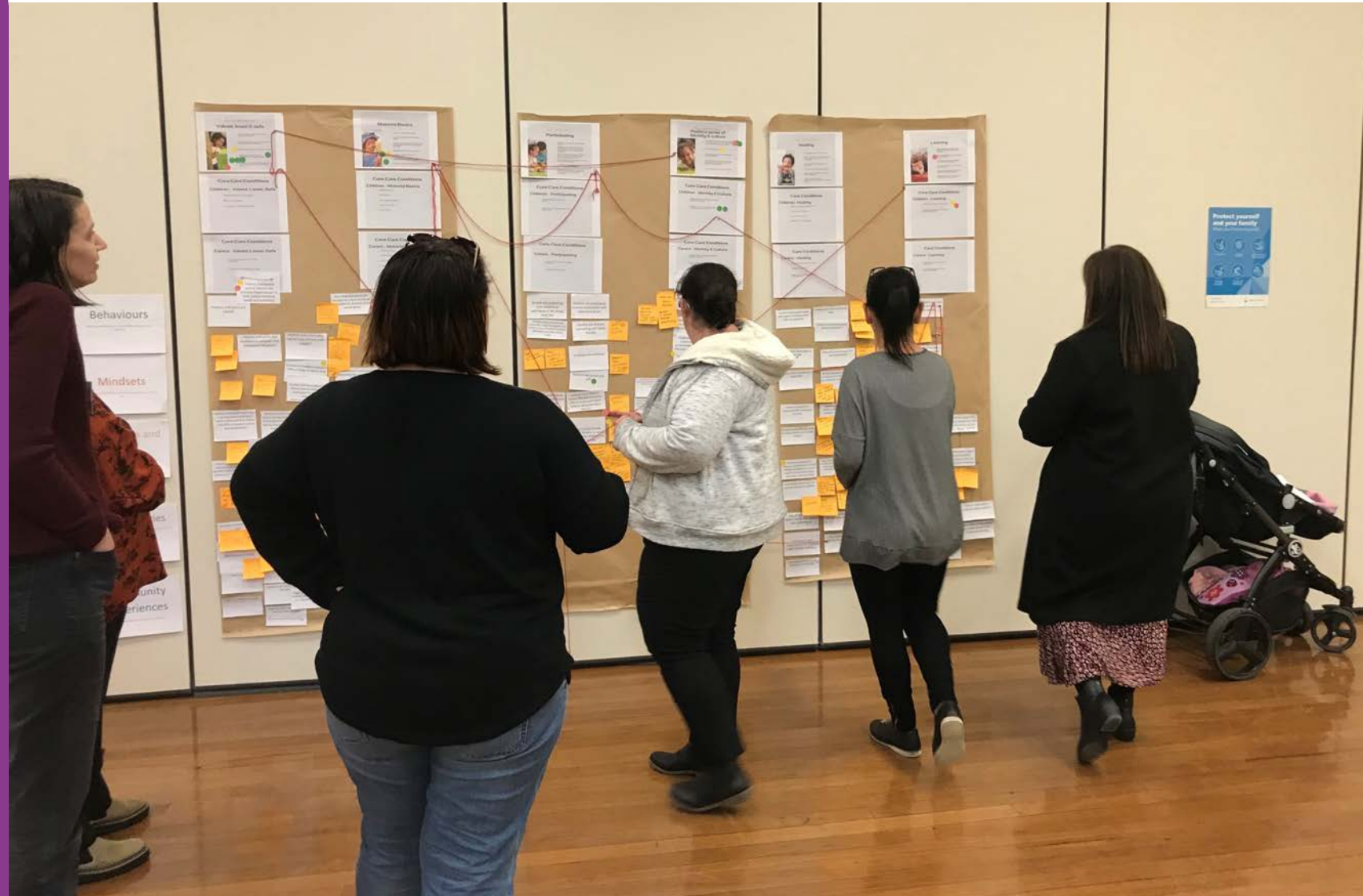
Clear Horizon

Fiona Merlin, Hands Up Mallee & Froukje Jongsma, Clear Horizon, AES Conference 2023

Agenda

Inclusive, usable and accessible ways to develop and use MEL

- Collaboratively build a MEL Framework
- Collective approaches to creating nested MELs
- Participatory mini-MELs for ongoing measurement, evaluation & learning



Two important realisations

A MEL Framework is vital

.

It needs to be informed by:

The expertise and aspirations of our community.

Relevant research findings.

Local data insights.



What a MEL Framework offers

1. Supports navigating from small-scale to population level changes
2. Embeds measurement, evaluation & learning into all work
3. Creates a line of sight

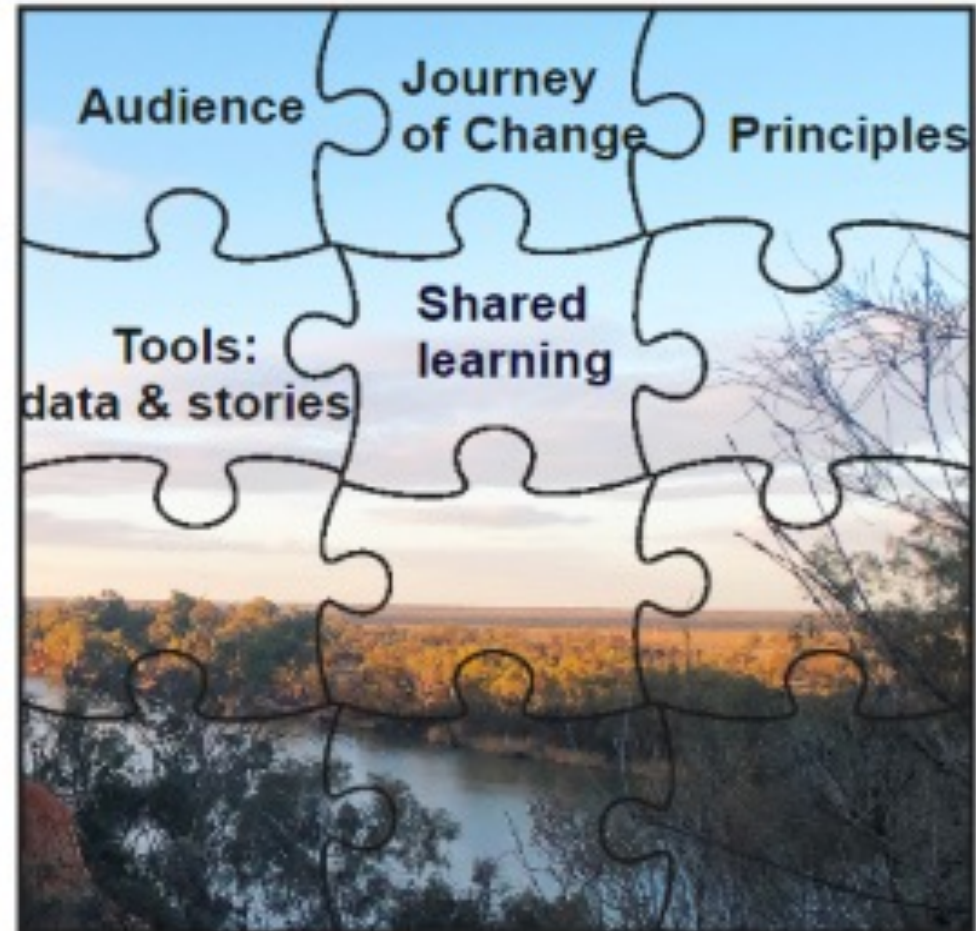
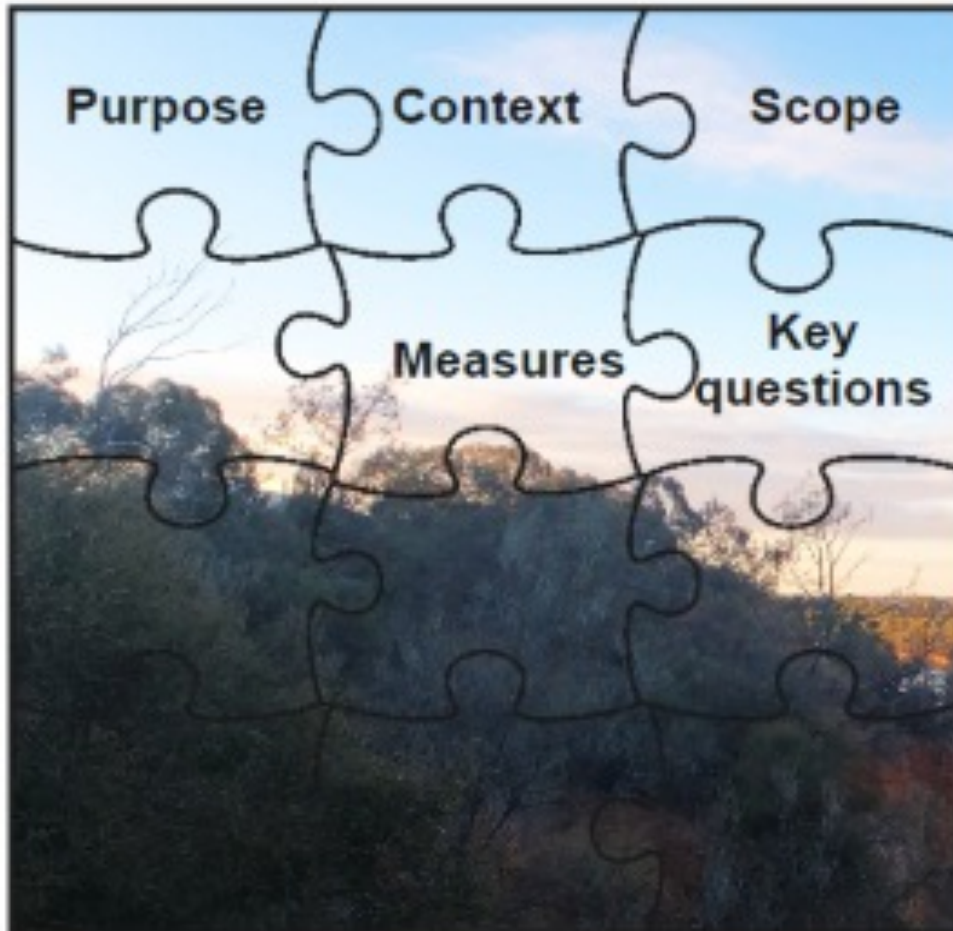




Elements of the overarching MEL Framework

and the importance of collaboration for it to be inclusive, useable, and accessible





How We Co-Designed the HUM MEL FRamework

**Gathering Participants:
Hands Up Mallee**

**Collaborating with experts:
Clear Horizon**

Overarching MEL Framework

Overarching Theory of
Change

Key Evaluation Questions

A Set of Principles

MEL Reporting and
Learning Rhythm



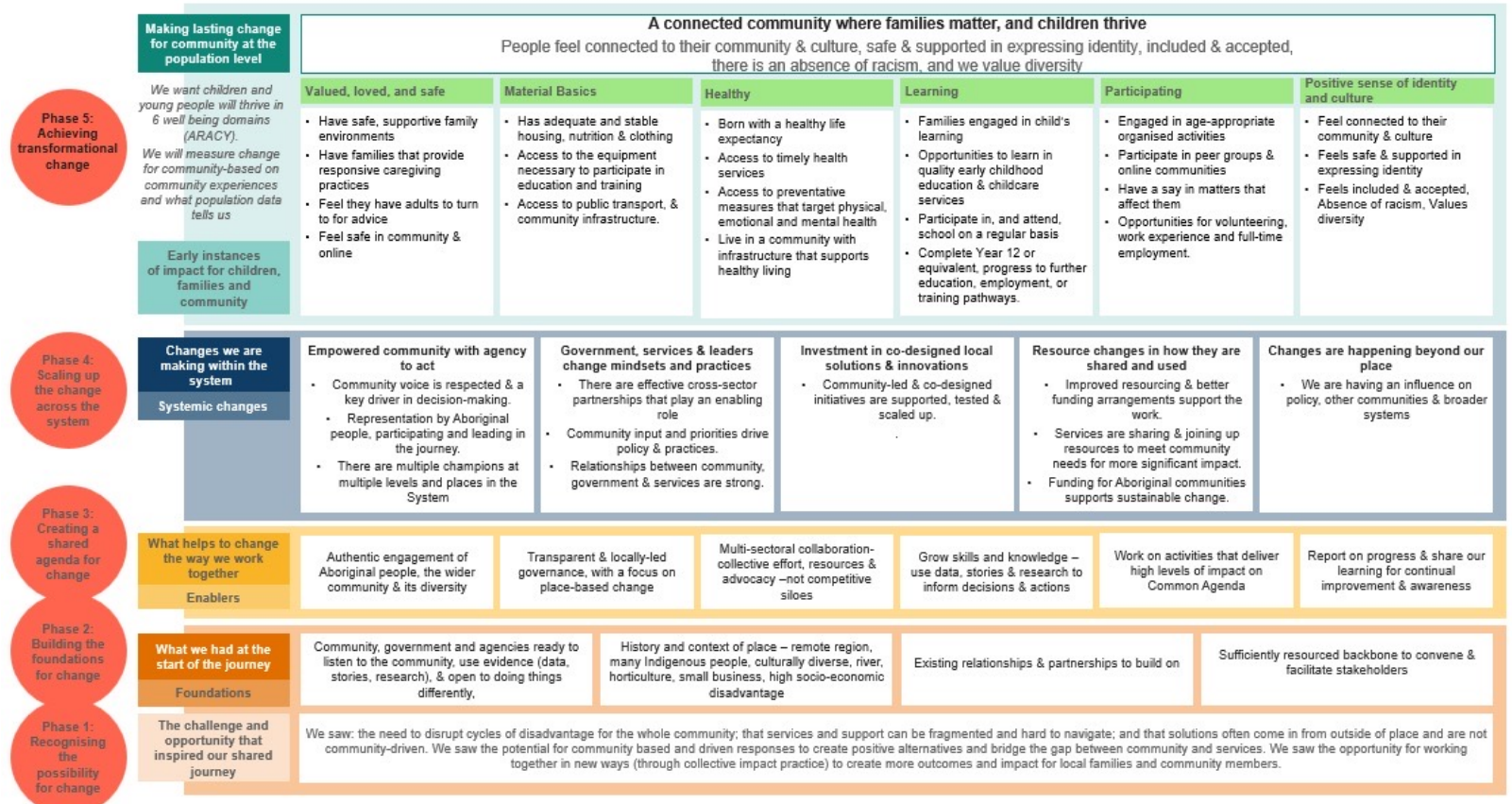
HUM MEL Framework – Clear Horizon



Overarching Journey of Change

Keeping an eye on the Community Aspiration and how we will achieve this as a collective

Adopted ARACY's NEST Outcomes



MEL Advisory Lenses

Useful to reflect on and grow
our MEL capabilities

Collaboration is our #1 Lens



More than one MEL

Overarching High-level

Nested MEL

Mini MELs



HIGH-LEVEL

High Level MEL Framework measures 10 to 15 Year Outcomes

0 – 8 Years
Children & Families

9 – 18 Years
Young People & Youth

Nested MEL Frameworks measure 5 Year Outcomes





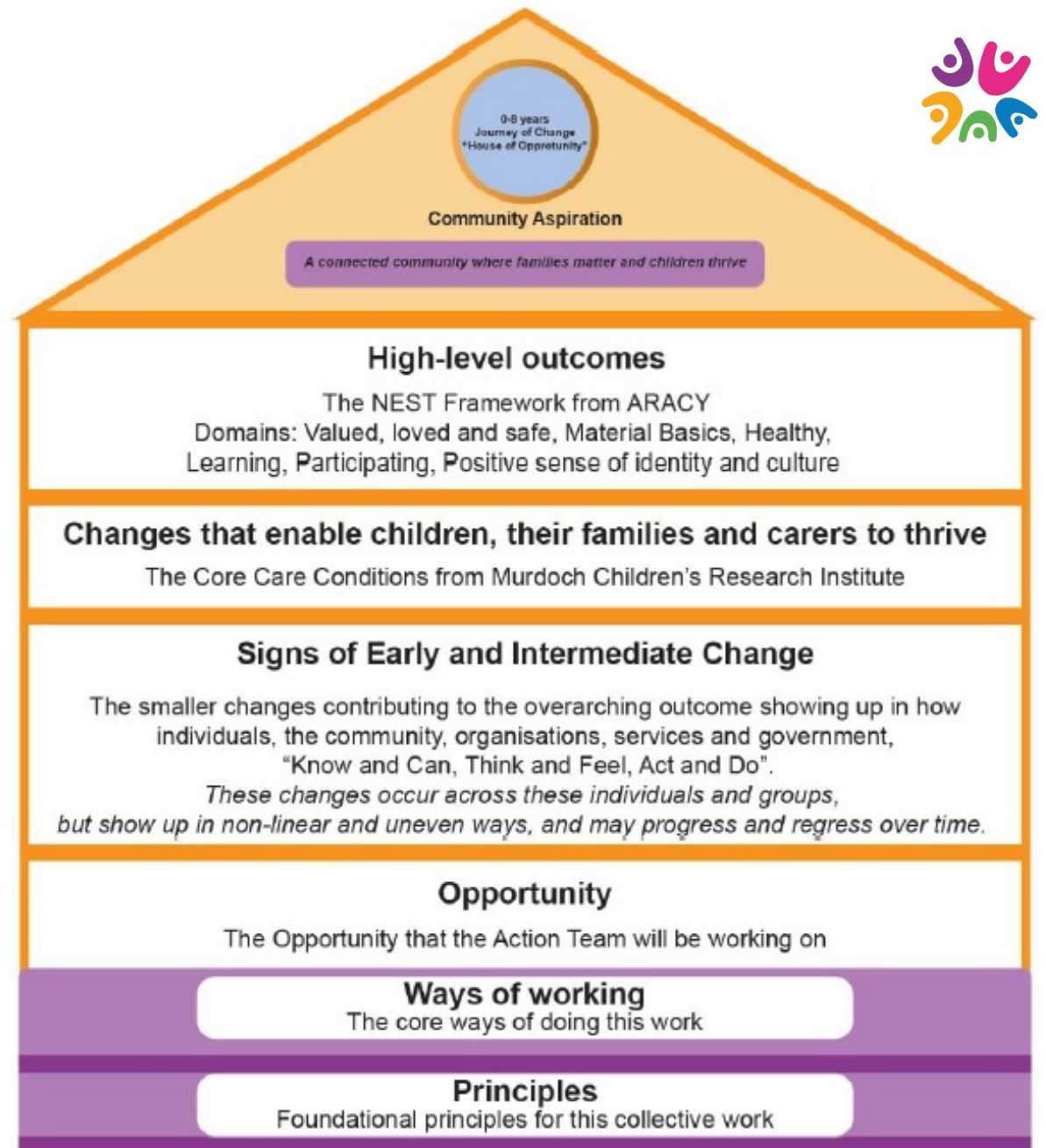
Preparing Nested MELs through discovery

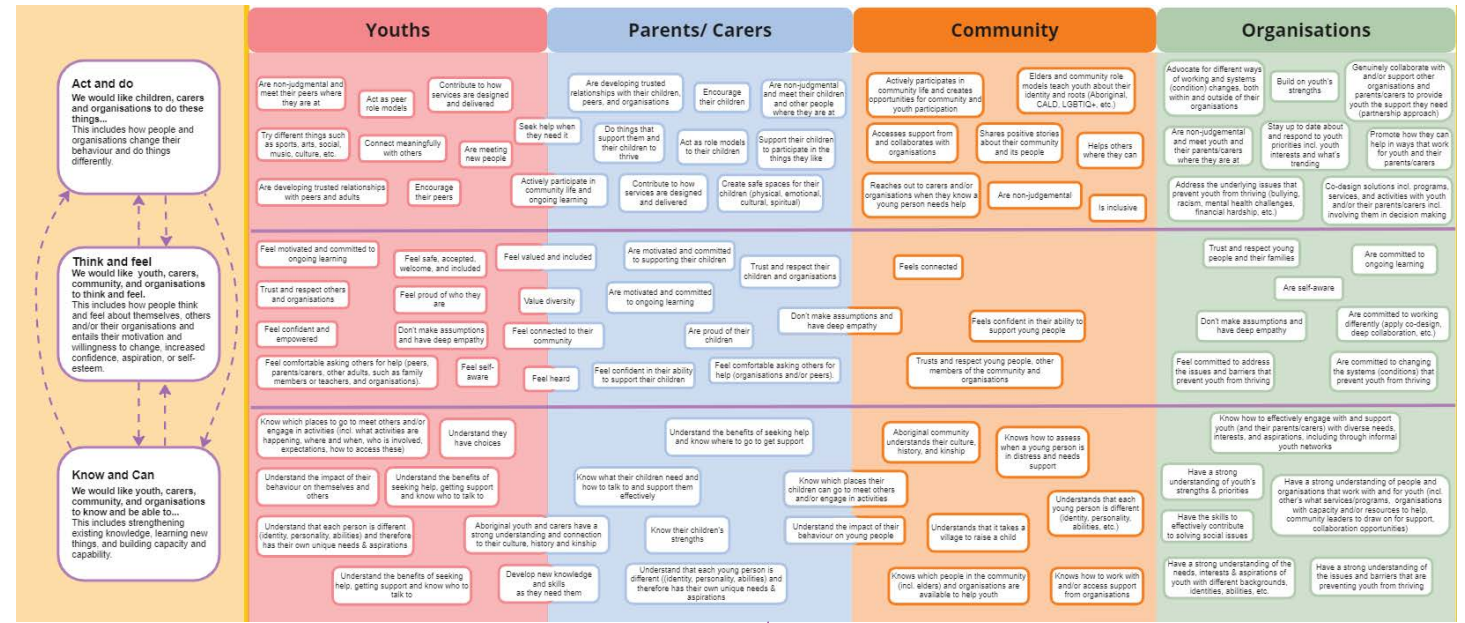
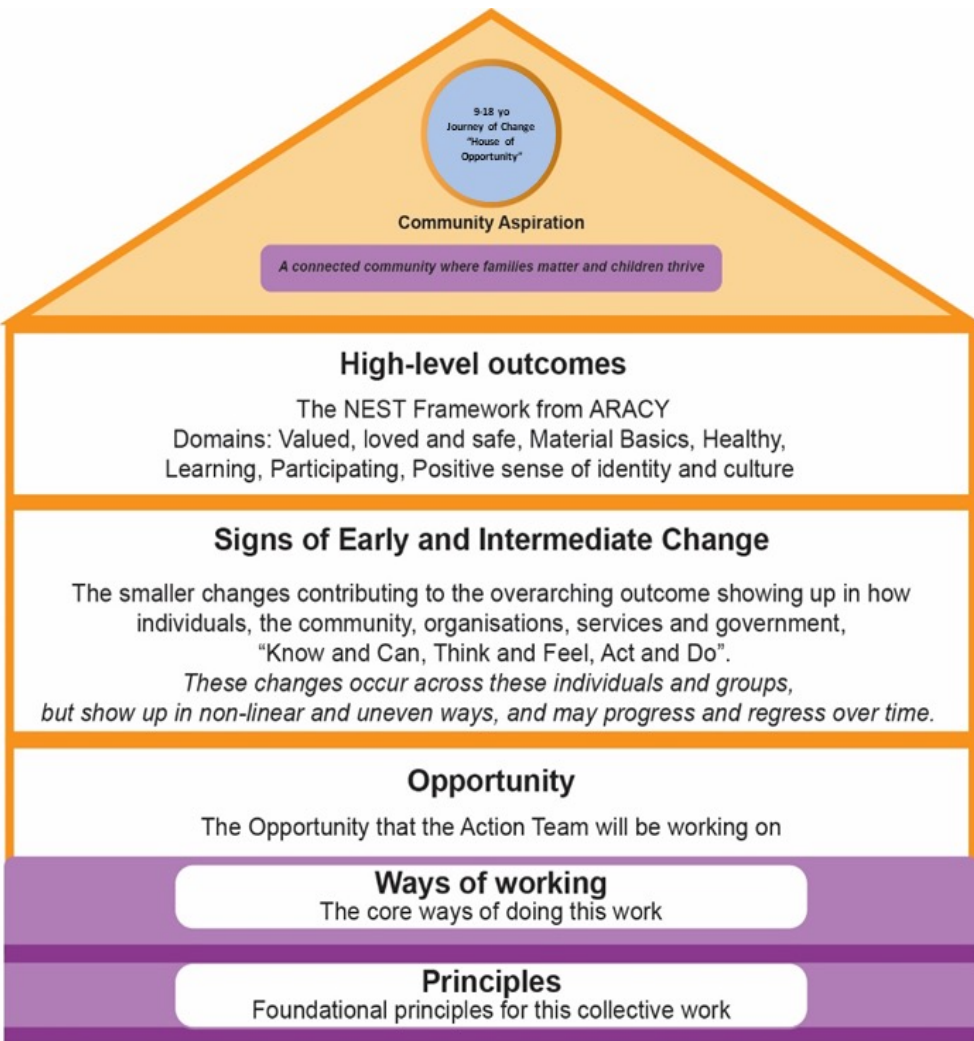


0-8 Nested MEL Story of Change

Includes layer of
enabling Core Care
Conditions For Children
and Families

Dr Tim Moore, Murdoch
Children's Research Institute





We created a menu that includes the building blocks for creating mini-ToCs

9-18 Nested Theory of Change building blocks



Youth-Led Consultation & Discovery Sessions



Youth Input into a Theory of Change

How did this ensure that the MEL Framework use is inclusive accessible and useable?





Keeping it collaborative

Participatory approaches to evaluation and learning



Creating mini MELs

Clarifies purpose and
scope

Encourages better
design of actions

Prepares evidence
collection along the way



Favourite Participatory Evaluation Tools

Journey Mapping

Feelings, Thinking

Bright Spots, Hot Spots

Gives, Gets

What Changed, Learnings

What next?



Favourite Participatory Evaluation Tools

Most Significant
Learning

Most Significant
Change

Clear Horizon



Most Significant Change Template



Most Significant Learning



Evaluation Tools— Clear Horizon

Evaluating: better together

- Learning from external evaluation reports
- Internal evaluation reports and videos
- Using mini-MEL planning templates
- Reporting & elevating learnings each quarter



HUM



Through the lens of community

- Inclusive
- Accessible
- Useable

- People supporting people
 - Participatory approaches
 - Shared language
 - Relationships strengthened
- Growing appetite for evaluation as a way of working
- Ongoing skill building with cross-sector partners & community
- Testing findings with partners & community increases validation of reports
- Increased community ownership & accountability to community



You can find out more about Clear Horizon at the AES 2023 Conference booth or contact us at:



Froukje Jongsma

She/her

Principal Consultant: Social Impact
Clear Horizon

froukje@clearhorizon.org.au

STAY CONNECTED & KEEP LEARNING



Clear Horizon

Join our Community
clearhorizon.circle.so



**Clear Horizon
ACADEMY**

Enrol in a Course
clearhorizonacademy.com



track to change™

Book a demo
tracktochange.com

Thank-you

Resources are available at the Clear Horizon booth

You can find out more about Hands Up Mallee or contact us at:



Fiona Merlin

She/Her

Measurement, Evaluation
& Learning Coordinator

fiona.merlin@mildura.vic.gov.au



www.handsupmallee.com



hello@handsupmallee.com



@handsupmallee