

---

# CUTTING THROUGH COMPLEXITY

Stakeholder mapping using an  
ecosystems lens

WEDNESDAY, 18 OCTOBER  
2023



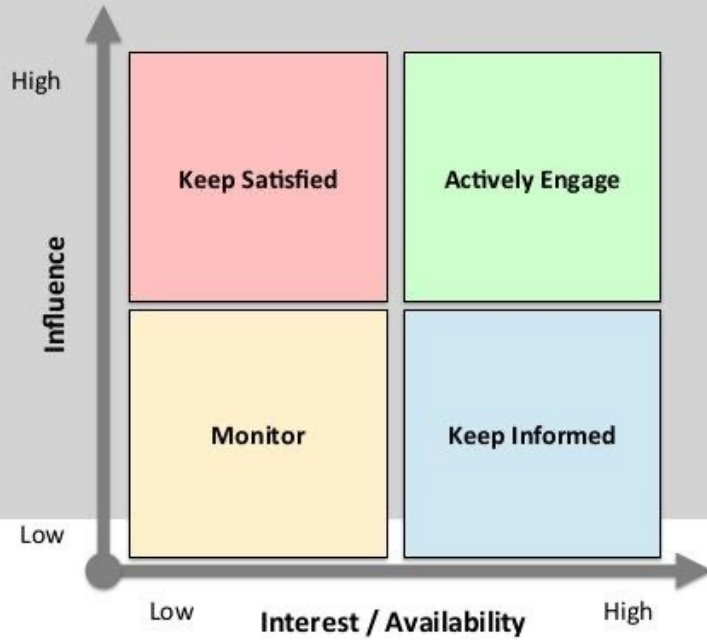
---

# STAKEHOLDER MAPPING

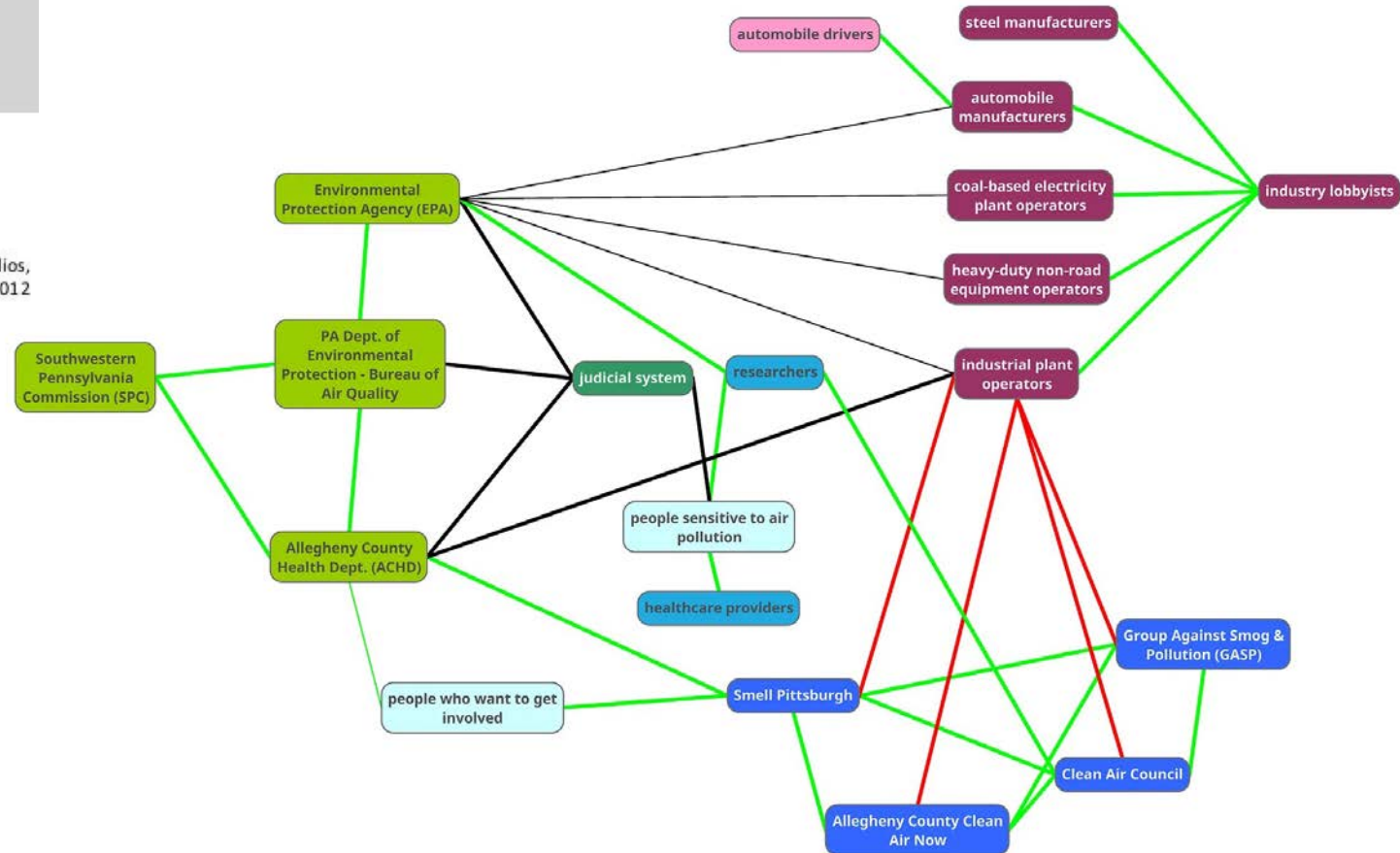
The process of identifying and categorising stakeholders, their influence and interest in an intervention (and its evaluation).



# THE STAKEHOLDER MAP



Source: The Stakeholder Management framework for teams, programs and portfolios, Scaled Agile, Inc, 2012



# ECOSYSTEM



# THE STAKEHOLDER ECOSYSTEM

---

STAKEHOLDER GROUP 1:

# ARCHITECTS

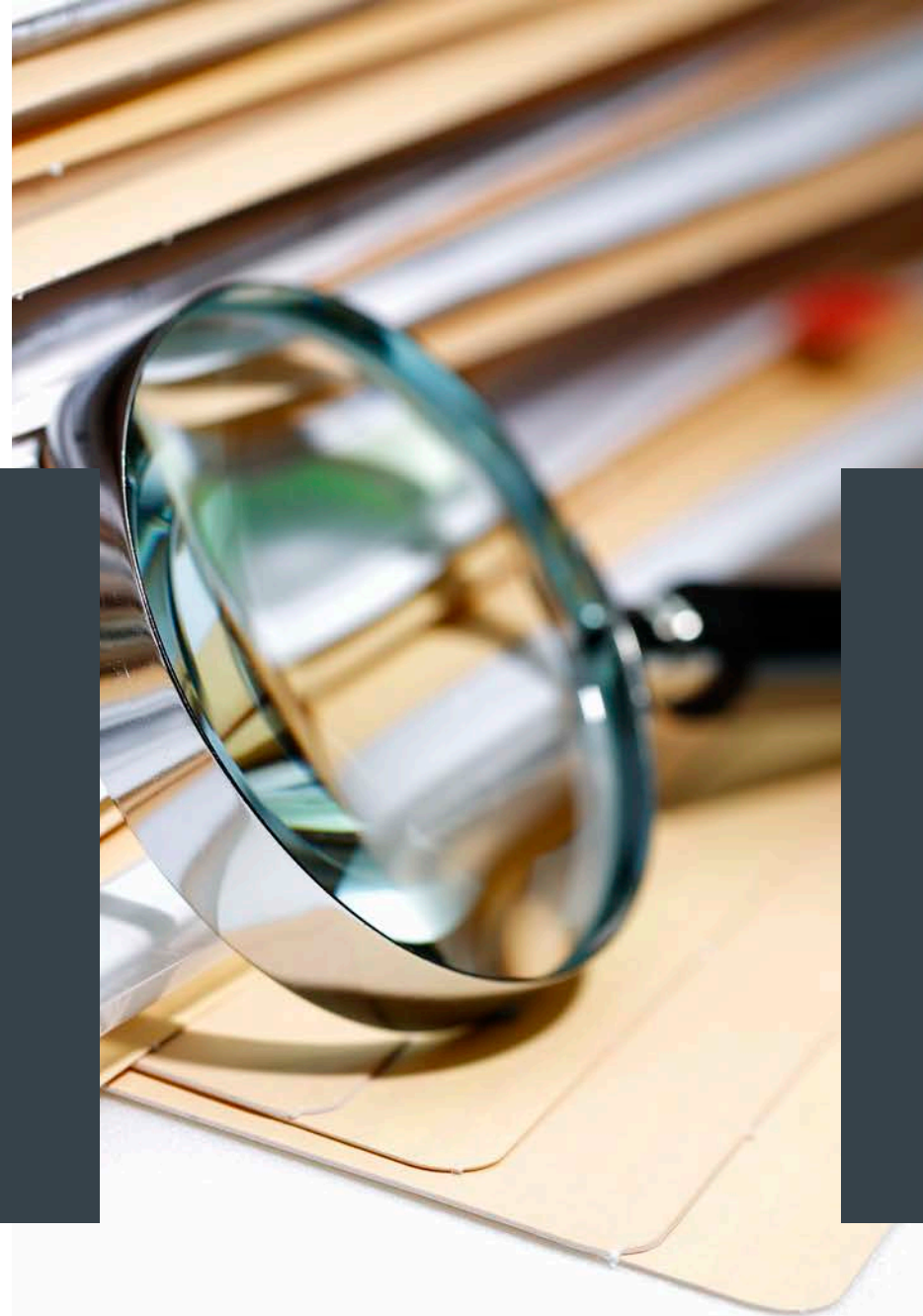
Those involved in the design of the intervention

---

STAKEHOLDER GROUP 2:

# STEWARDS

Those involved in the governance and oversight of the intervention

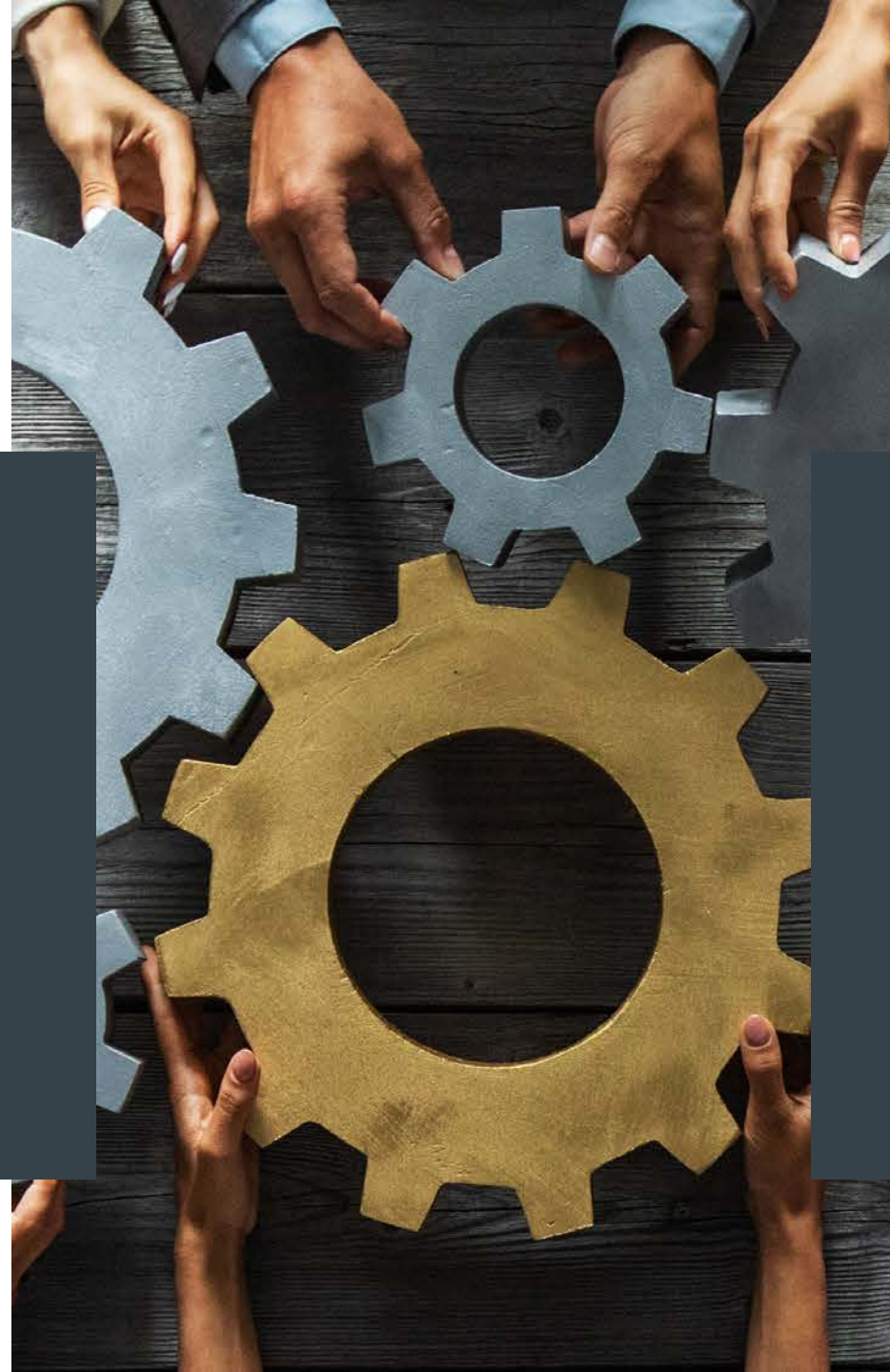


---

STAKEHOLDER GROUP 3:

# CONNECTORS

Those responsible for managing the delivery of the intervention



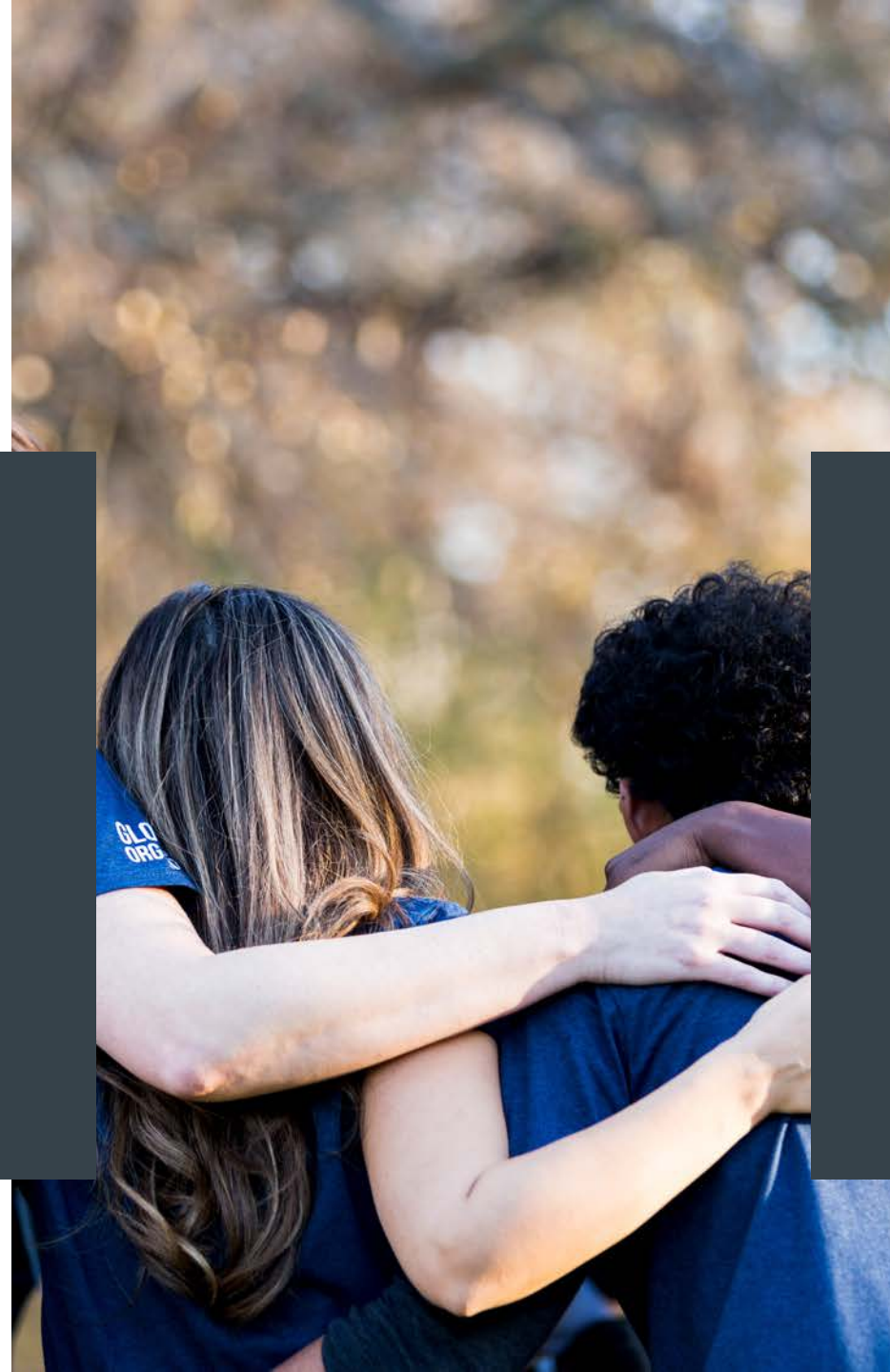


---

STAKEHOLDER GROUP 4:

# DRIVERS

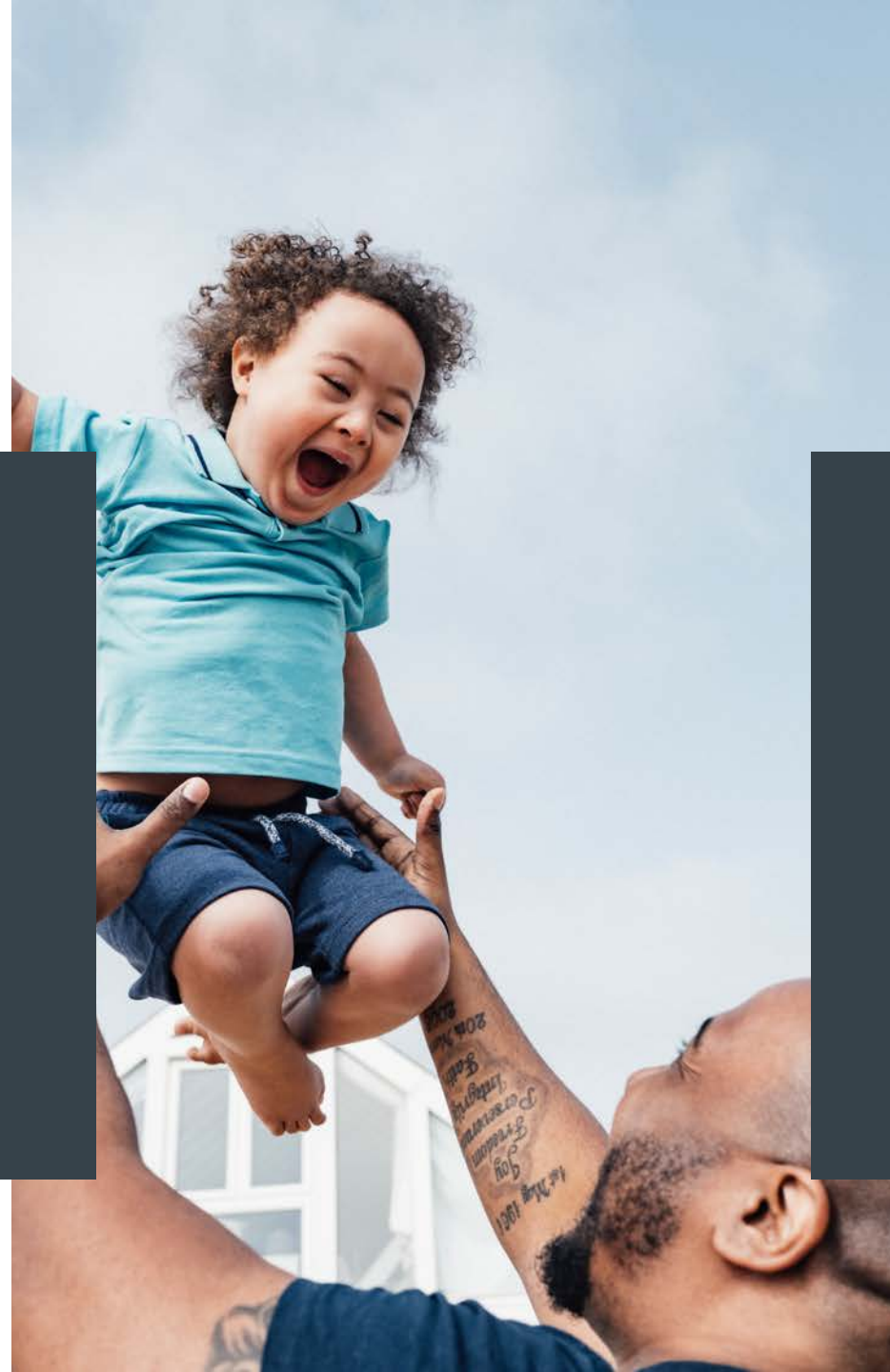
Those doing the work of delivering the intervention to the target population (the 'boots on the ground')



---

STAKEHOLDER GROUP 5:

# THOSE EXPECTED TO BENEFIT FROM THE INTERVENTION





**EXAMPLE: CHILD AND YOUTH WELLBEING  
PROGRAM STAKEHOLDER ECOSYSTEM**

# CHILD AND YOUTH WELLBEING PROGRAM

## Architects

Cabinet  
Ministers

Expert  
Advisory Group

## Stewards

Minister for  
Child Poverty  
Reduction

Social  
Wellbeing  
Board

Child  
Wellbeing  
Agency DCEs

Children and young people

## Connectors

Central government social sector  
agencies: Action Plan Leads,  
contract managers

## Drivers

Social  
service  
providers

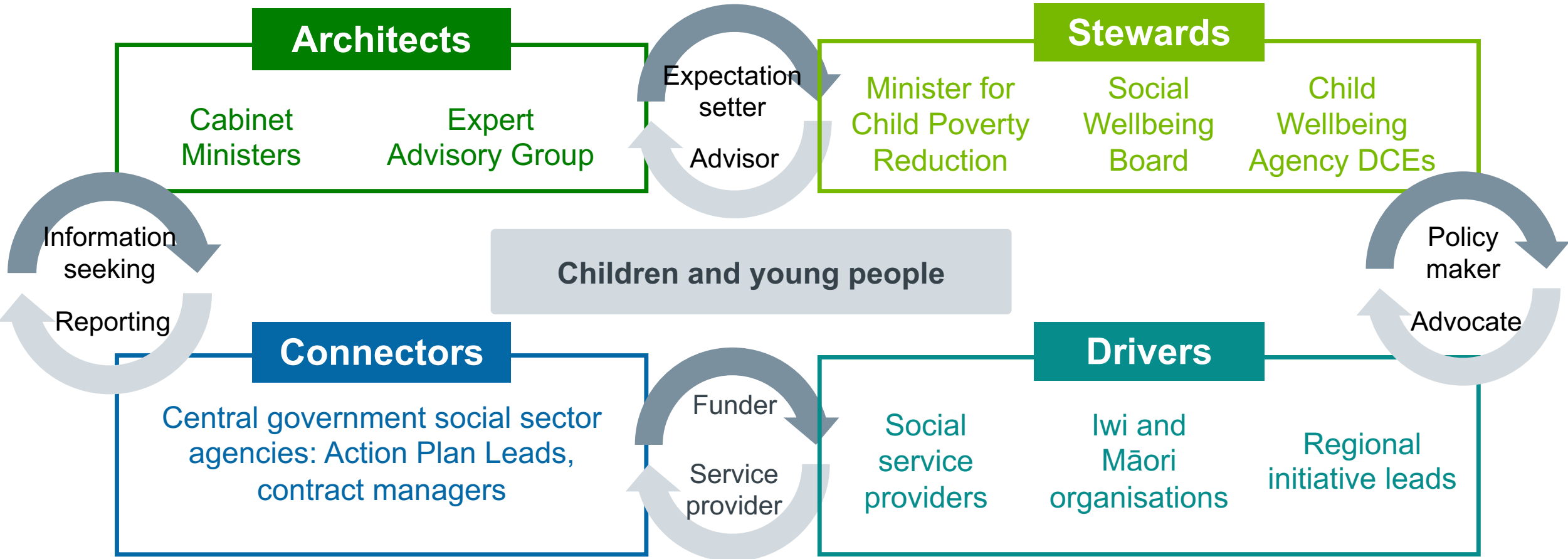
Iwi and  
Māori  
organisations

Regional  
initiative leads

# Interactions (relationships) between stakeholder groups



# CHILD AND YOUTH WELLBEING PROGRAM



**Environmental  
(contextual) factors that  
interact with the  
stakeholder ecosystem**



# CHILD AND YOUTH WELLBEING PROGRAM

## Architects

Cabinet Ministers

Expert Advisory Group

Expectation setters  
Advisor

## Stewards

Minister for Child Poverty Reduction

Social Wellbeing Board

Child Wellbeing Agency DCEs

Children and young people

## Connectors

Central government social sector agencies: Action Plan Leads, contract managers

Funder  
Service provider

## Drivers

Social service providers

Iwi and Māori organisations

Regional initiative leads

## Contextual factors

Other child and youth focused initiatives

Election cycle (upcoming NZ election)

Economic outlook (pending recession?)

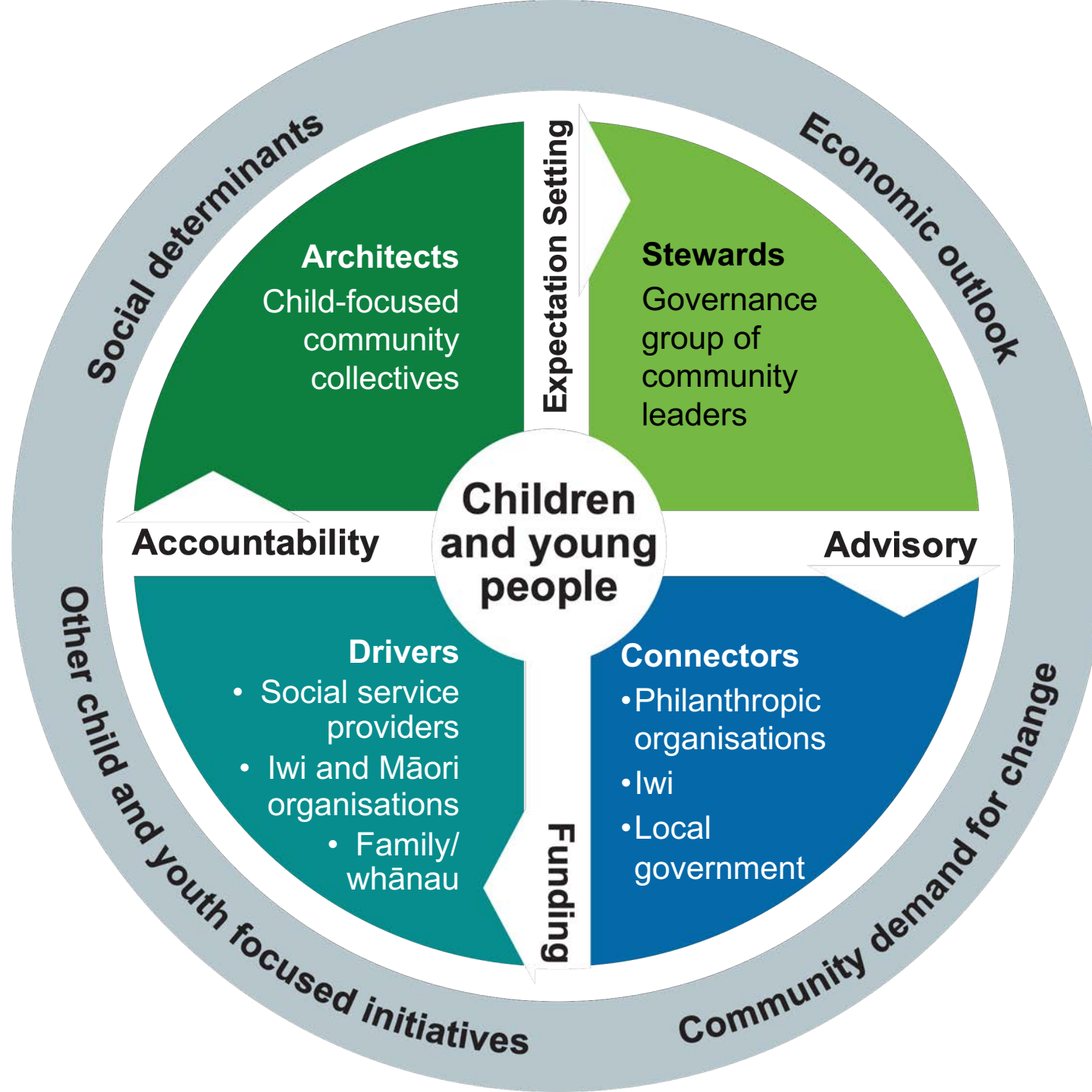
Information seeking

Reporting

Policy maker

Advocate





# CHILD AND YOUTH WELLBEING PROGRAM

## Architects

Cabinet Ministers

Expert Advisory Group

Expectation setters  
Advisor

## Stewards

Minister for Child Poverty Reduction

Social Wellbeing Board

Child Wellbeing Agency DCEs

Children and young people

## Connectors

Central government agencies, heads, managers

Funder  
Service provider

## Drivers

Social service providers, organisations, Regional initiative leads

**MONITORING DATA**

**EXPERIENTIAL DATA**

**COMPARATOR DATA**

## Contextual factors

Other initiatives

Election cycle (upcoming NZ election)

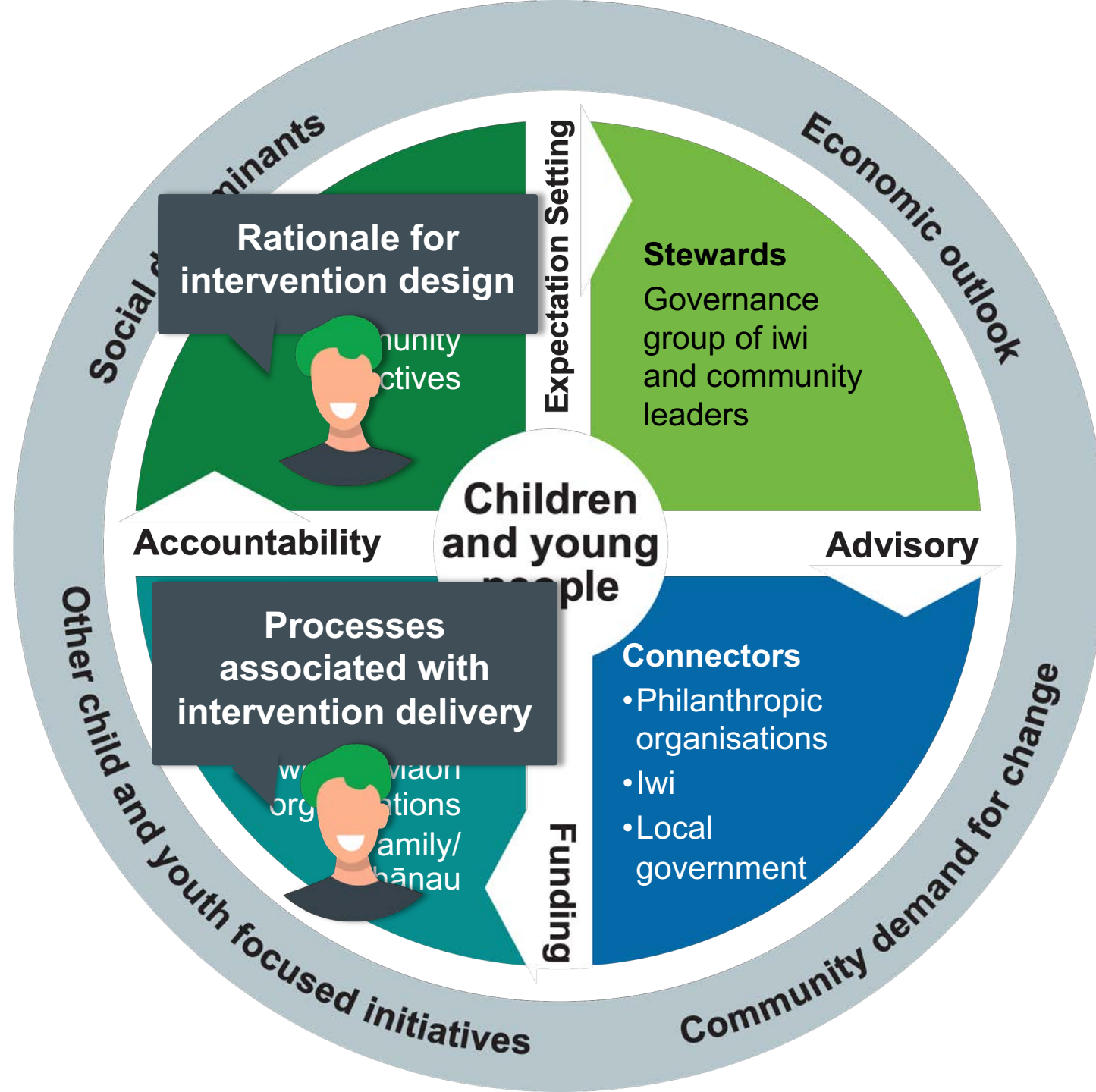
Economic outlook (pending recession?)

Information seeking

Reporting

Policy maker

Advocate





**NGĀ MIHI  
THANK YOU**