



STRENGTHENING
SYSTEMS FOR
INDIGENOUS
HEALTH CARE EQUITY

Reflecting with relationships, hearts, minds and spirits: A Developmental Evaluation

Australian Evaluation Conference
Brisbane, Meeanjin
27th Sept 2023

Presenters:

Professor Roxanne Bainbridge (Gunggari, Deputy Director Poche Centre, UQ)

Ms. Kris Vine (Research Fellow, UCRH)

Dr Tessa Benveniste (CRE-STRIDE Evaluation Fellow, CQUniversity)

CRE-STRIDE Evaluation Team:

Veronica Matthews, Ross Bailie, Roxanne Bainbridge, Emma Walke, Deborah Askew,
Jodie Bailie, Tessa Benveniste, Alison Laycock, Kris Vine, Kristy Clancy, Danielle
Cameron, Talah Laurie, Kerryn Harkin



*Acknowledging the Ancestors,
Elders, Peoples, and Country of
all First Nations, and the Jagera
and Turrbal people of this land.*



Key messages

The CRE-STRIDE approach and principles have informed and shaped our evaluation through:

- **Indigenous leadership**

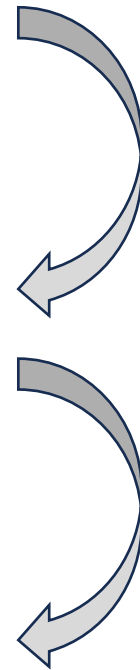
- Embedded
- Indigenous Research Framework

- **Design**

- Ngaa-bi-nya framework
- Data collection tools

- **Findings**

- Relationality
- Relevance and responsiveness
- Researcher wellbeing



STRIDE Evaluation Team

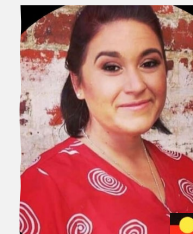
Evaluation Working Group

- Oversee design and conduct of the evaluation
- Membership
 - 30% Indigenous members
 - Representation from all CRE-STRIDE research programs
 - Students/ early career researchers
 - External collaborators



STRIDE 'Fellas'

- Indigenous research fellows working with CRE-STRIDE
- Support data collection, analysis and translation of evaluation

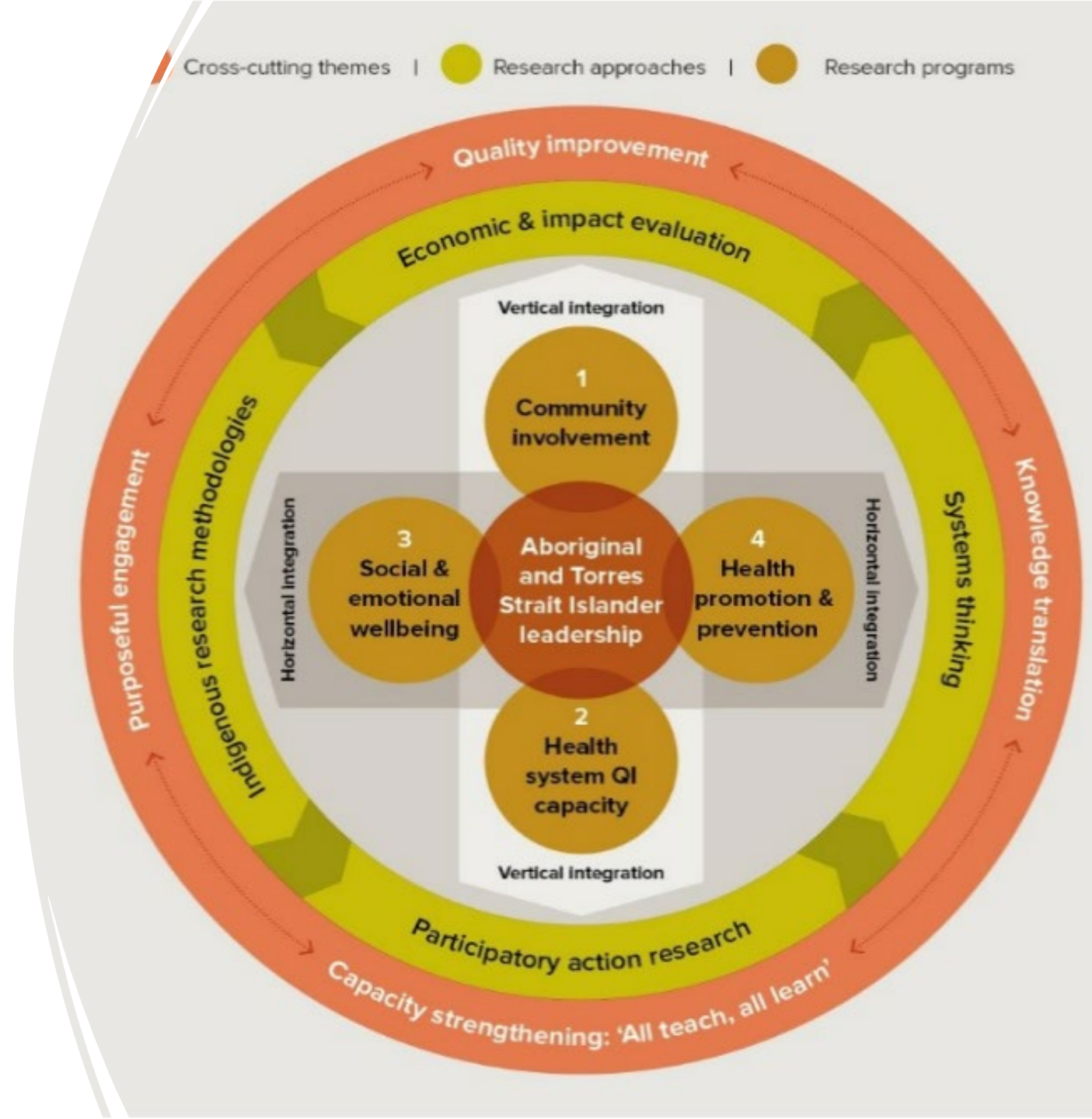


Background and Context

CRE-STRIDE Vision

STRIDE's vision is **equitable health care** for Aboriginal and Torres Strait Islander peoples.

Through **quality improvement** (QI) and **collaborative** implementation research, we are aiming to strengthen **primary healthcare** (PHC) and its **interconnections** to broader systems that impact on **health and wellbeing**.



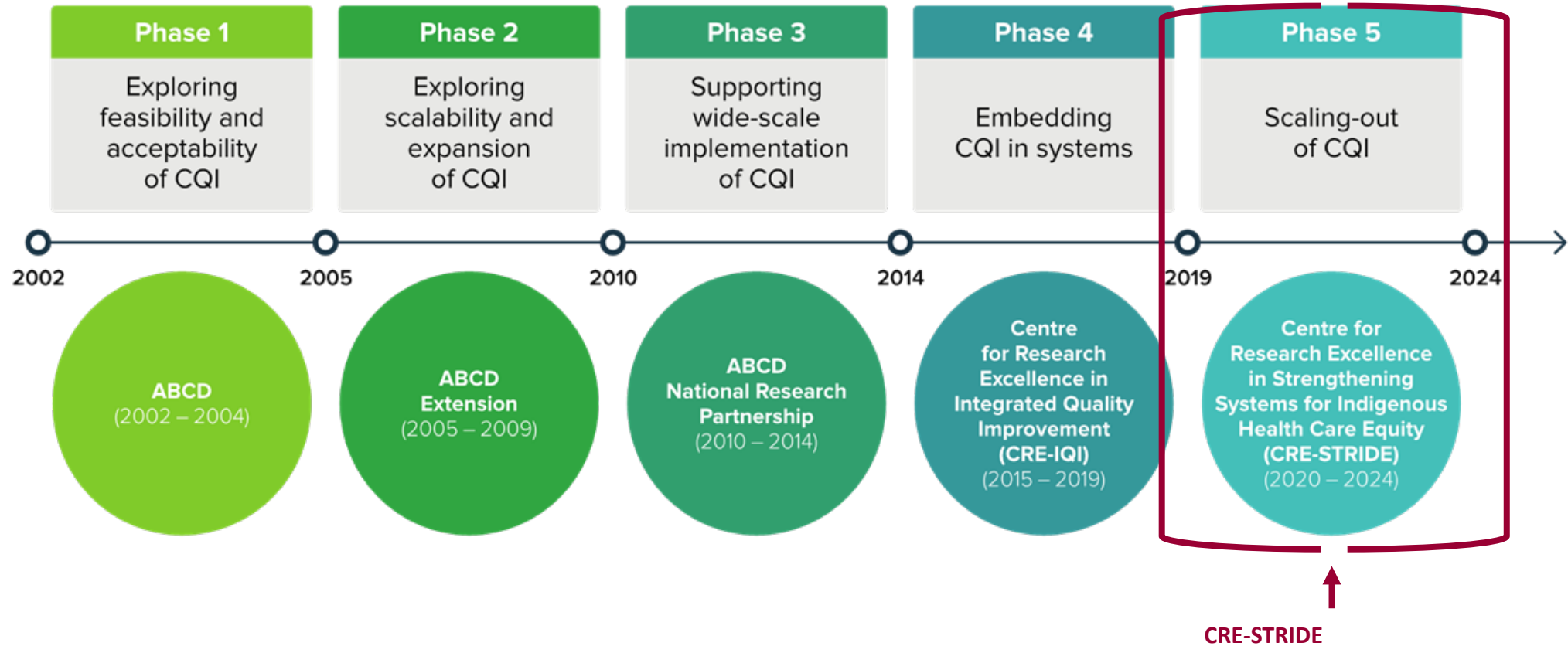
Purpose and Scope of the Evaluation

In what ways are the aims of the CRE-STRIDE being achieved?

- What are the mechanisms and contextual factors?
- What are the interim outcomes?

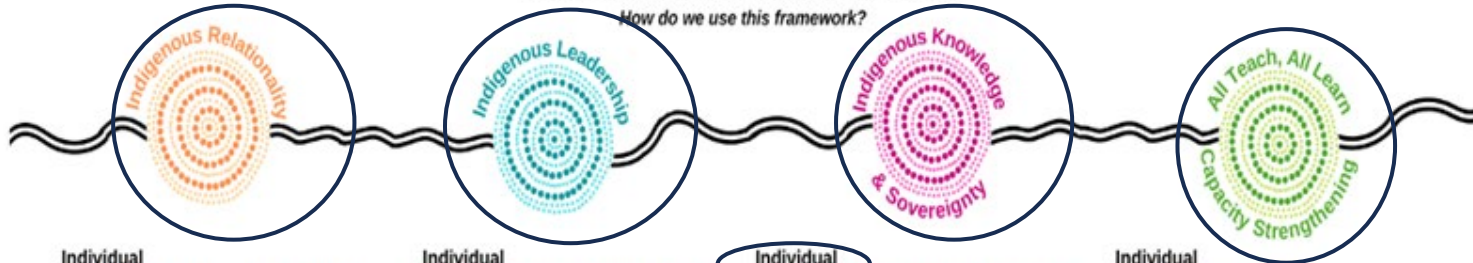


Development of CRE-STRIDE



INDIGENOUS RESEARCH FRAMEWORK

How do we use this framework?



Individual

Take time to establish relationships with community and stakeholders. Think holistically, be a 'boundary spanner', look for expertise in other sectors to inform your work.

Project

Assessment of projects against existing tools related to Indigenous health research: Quality Assessment Tool for Indigenous Health Research; Research for Impact Tool; CONSIDER statement (full references in recommended reading section).
Establish multi-disciplinary teams to incorporate consideration of broader social & cultural determinants into research.

Collaboration

Design & deliver a masterclass on skills for inter-sectoral research. Embed cultural competencies within capacity strengthening activities.

External

Advocate policy-makers and program managers to work outside of silos.
Lead by example!

Individual

Keep an open mind, make efforts to understand and respect Indigenous perspectives. Look to provide opportunities to grow Indigenous research leadership. Build confidence in students & early career researchers through supportive mentorship.

Project

Establish Indigenous co-leadership arrangements of programs/projects.

Collaboration

Use of the Indigenous reference committee as a strategic advisory group for program/project issues.

External

Advocate funding bodies to recognise value of Indigenous investigators irrespective of academic metrics.

Individual

Seek out and incorporate Indigenous input on issues. If unsure where to start, ask a colleague. Critically reflect on your current practice and viewpoints and how this relates to Indigenous knowledge systems.

Project

Have project discussions early on (at project concept) with community/ health services to incorporate their perspectives on research questions and appropriate methodology, e.g., storytelling. (RCTs may not be the best approach!)

Develop research agreements with communities /health services about cultural intellectual property & data.

Collaboration

Offer masterclass on Indigenous data sovereignty. Ensure research translation processes/ products are appropriate for community & health service staff.

External

Collectively promote and advocate Indigenous rights & perspectives with community and other like-minded CREs

Individual

Seek out Indigenous/non-Indigenous reciprocal learning relationships with researchers or policy/service provider partners.

Project

Cultivate community/health staff research participation through provision of development opportunities across all phases of the research project.

Collaboration

Regular discussions about implementation of this framework, engendering a process of reflection and continuous improvement. Offer workshops to community/health service collaborators to demystify research and assist them to set their own research agenda and effectively engage in research. Engage policy makers to promote research knowledge translation

External

Continue to broaden the collaboration by inviting policy people, other health services, and people representing other sectors.

Indigenous Leadership



50% Indigenous leadership on core projects/ streams

Described by STRIDE members as....

'Fierce'

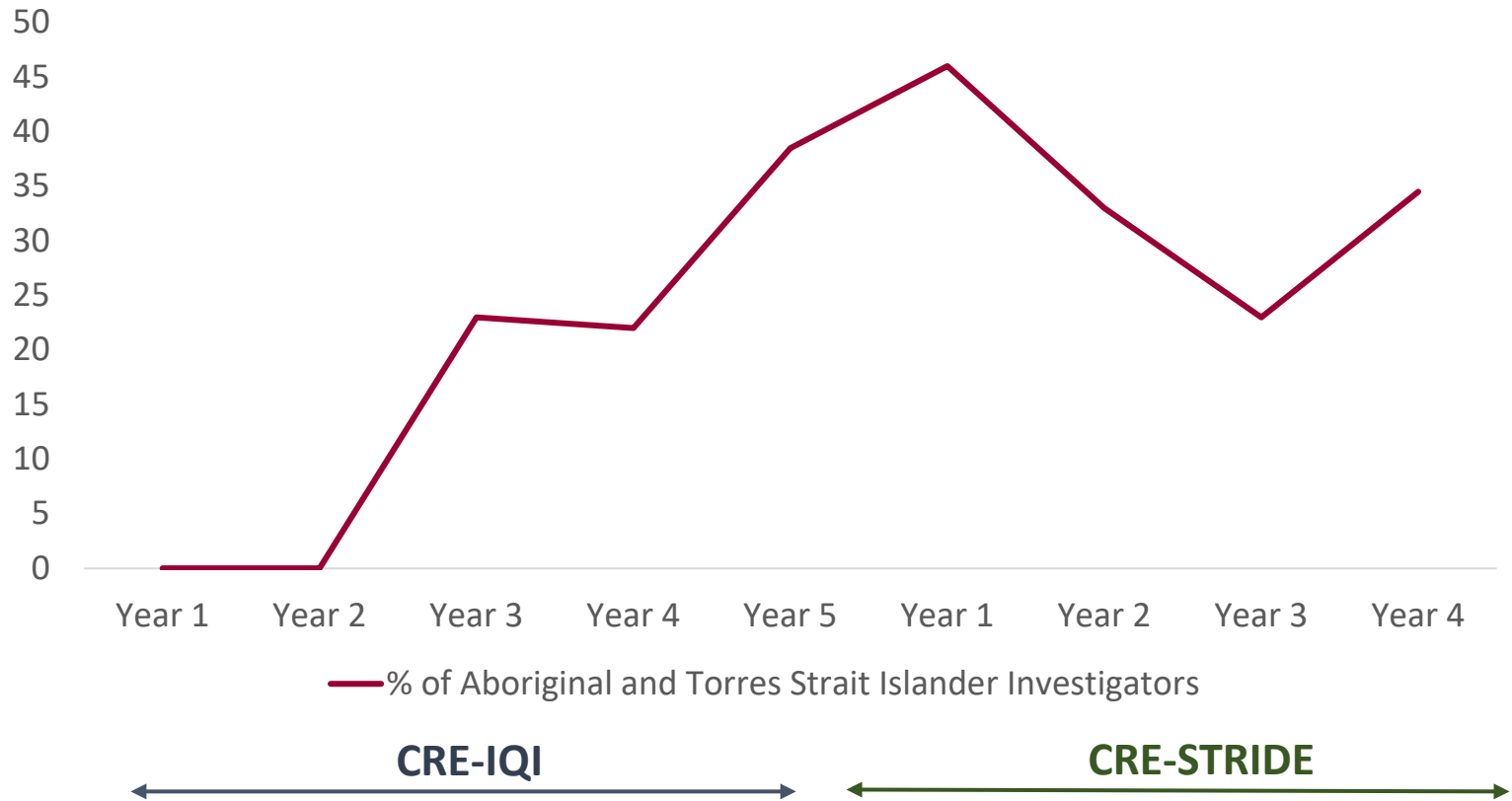
'Not tokenistic'

'Genuine'



Indigenous investigators across all funded grants

Indigenous Leadership in CRE-IQI and CRE-STRIDE Grants over Time

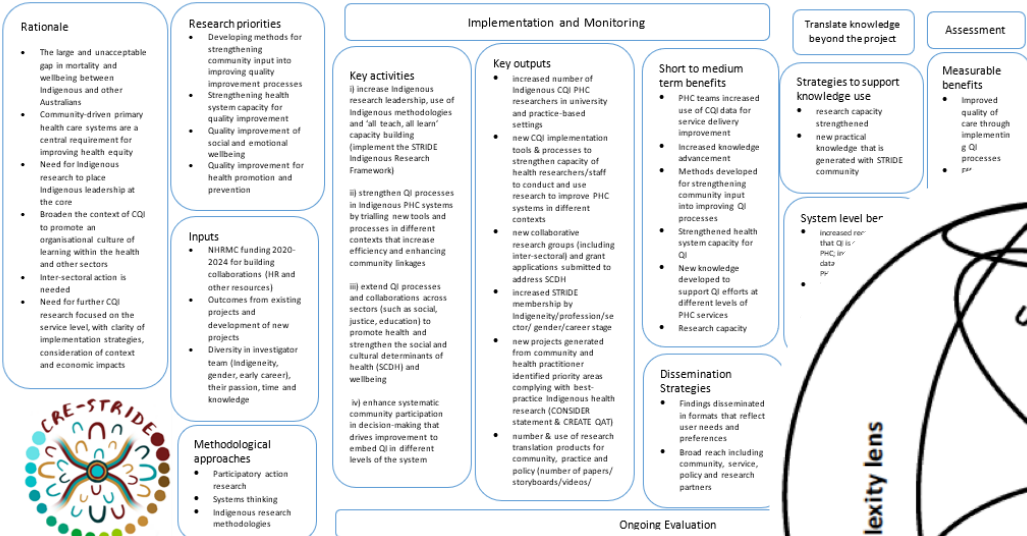


Evaluation: Design

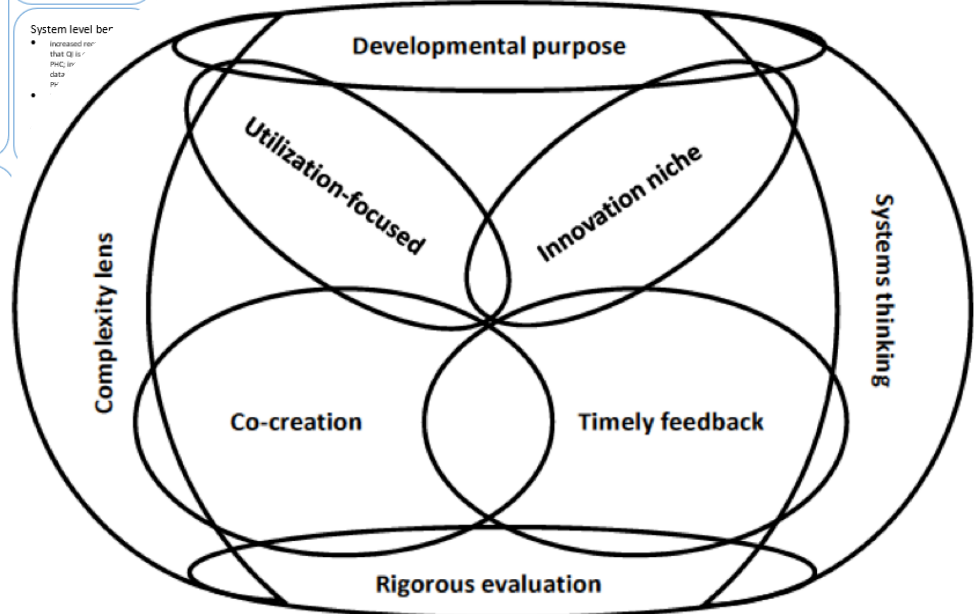
Evaluation Design

Program Logic

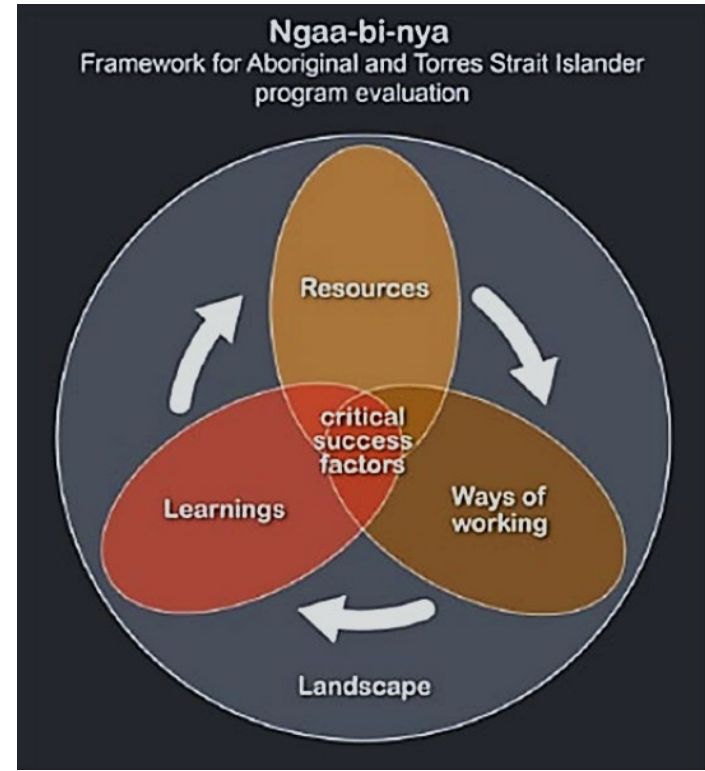
Vision: Equitable health care for all Aboriginal and Torres Strait Islander Australians through quality improvement (QI) and collaborative implementation research to strengthen primary health care (PHC) systems



Developmental Evaluation Patton, 2010.



Ngaa-bi-nya Framework Williams, 2018

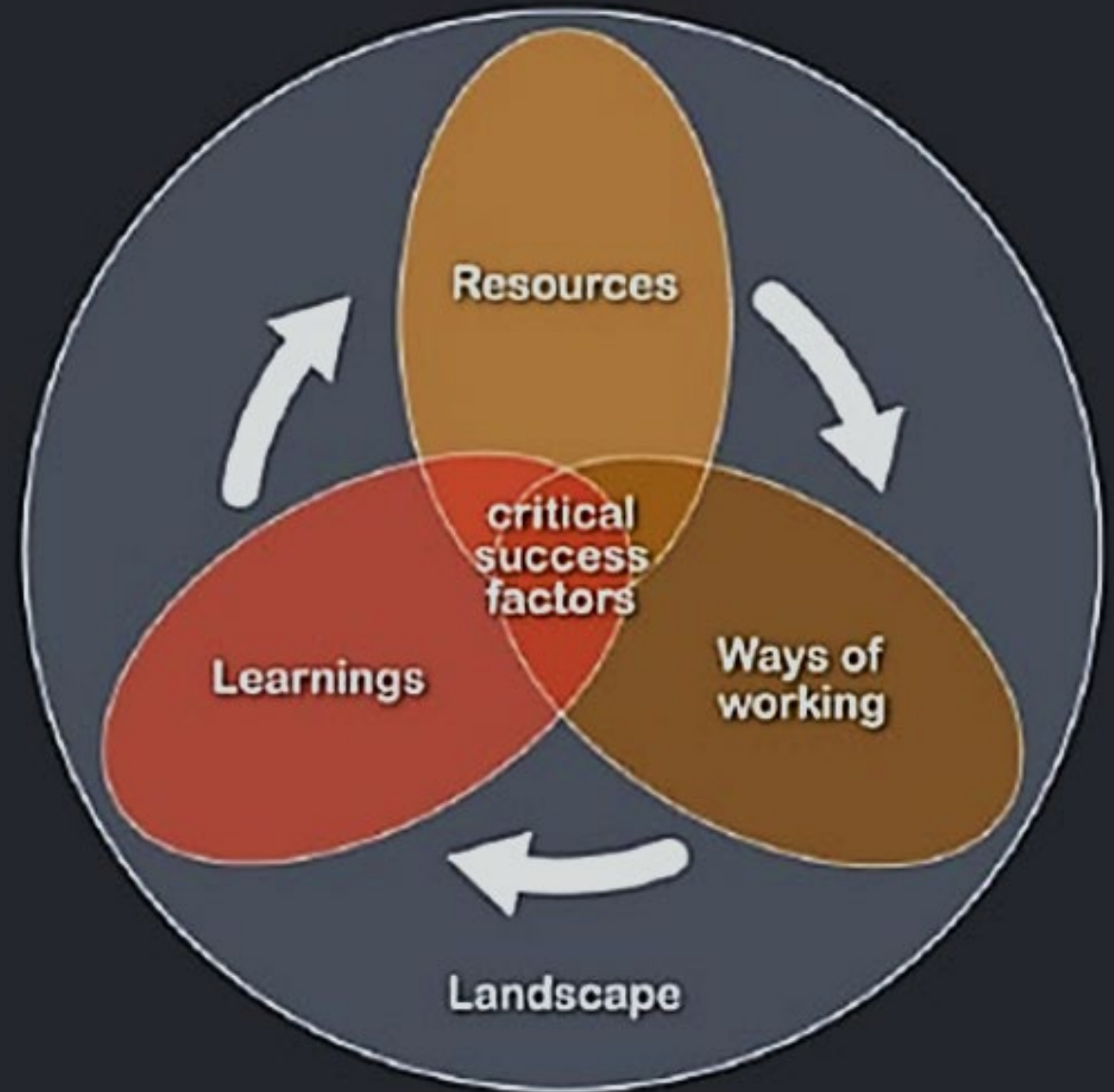


Integration of the Ngaa-bi-nya Framework

- Four domains – landscape, resources, ways of working and learnings.
- In each domain, prompts reflect statements of good practice and critical success factors and provide points of reflection for evaluations
- Ref: Williams, 2018
www.yulang.com.au



Ngaa-bi-nya Framework for Aboriginal and Torres Strait Islander program evaluation



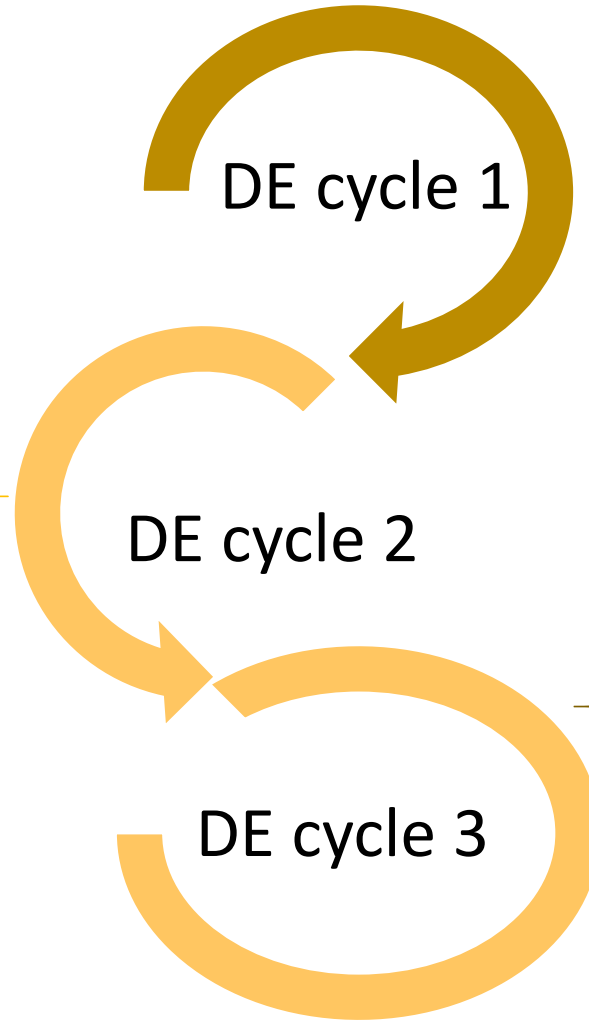
Data Sources and Developmental Evaluation Cycles



Coodjinburra gathering (July 2022: n =28)



Mulga Tree of Respect
First collection



Newsletter Content



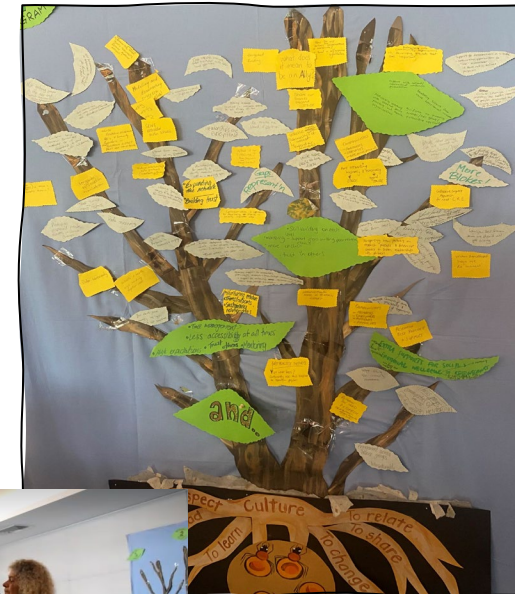
1:1 Interviews



Meeting Notes



Visual Facilitation



Mulga Tree of Respect
Second collection



Gimuy gathering (March 2023: n=40)



Evaluation: Interim Findings

Relationality

Relevance and Responsiveness



Climate Change and Aboriginal and Torres Strait Islander Health

Discussion Paper

Prepared for the Lowitja Institute and the National Health Leadership Forum by

Healthy Environments and Lives (HEAL) Network & Centre for Research Excellence

in Strengthening Systems for Indigenous Health Care Equity (CRE-STRIDE) November 2021

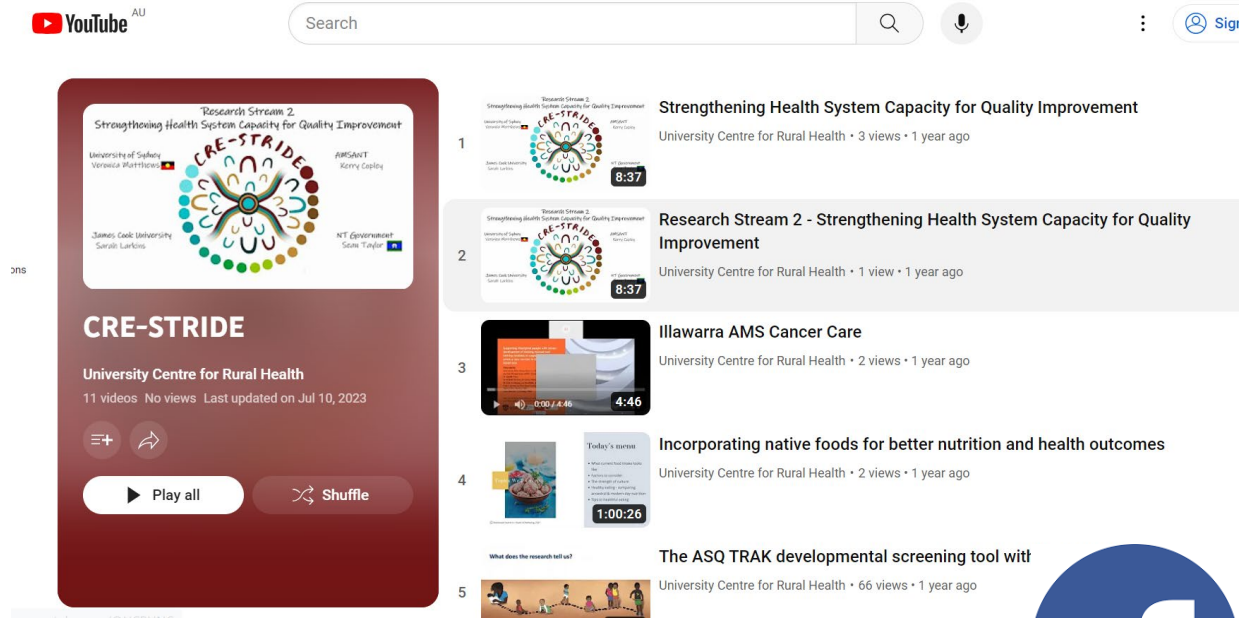
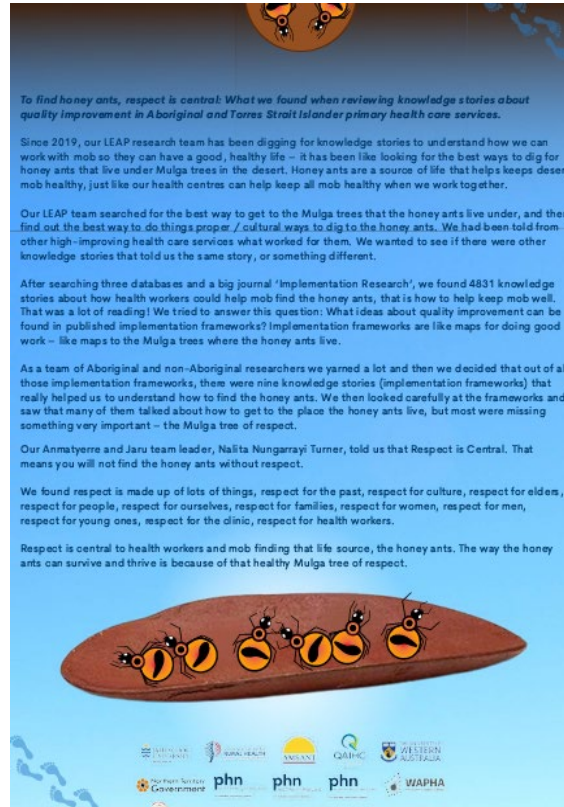
- Global (Lowitja Institute Discussion Paper – Collab with HEAL network)
- Local (Lismore flood response)
- Broader approach to health – social, cultural and *environmental* determinants



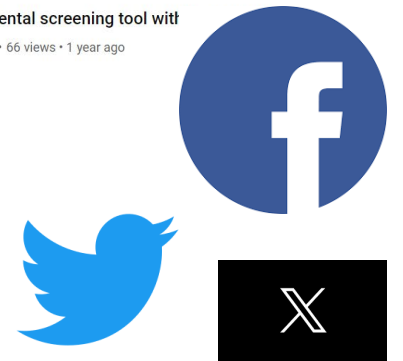
Researcher Social and Emotional Wellbeing



Re-framing Outcomes and Impact



- Non-traditional research outputs
- Research Translation
- Online engagement



Example of CRE-STRIDE research translation- **Respect is Central: The Honey Ant Story** - <https://www.jcu.edu.au/abrchss/health-systems-strengthening-and-workforce-development/the-leap-project>



Through Indigenous leadership of this developmental evaluation, we are continuing to collect, present and respond to data that is reflective of holistic ways of knowing, being and doing . By doing so, we elicit the underlying value that exists in the body of work being conducted across the research collaborative.

Questions/ Further Information

Roxanne Bainbridge
r.bainbridge@uq.edu.au

Tessa Benveniste
t.benveniste@cqu.edu.au

Kris Vine
Kristina.vine@sydney.edu.au



STRENGTHENING
SYSTEMS FOR
INDIGENOUS
HEALTH CARE EQUITY

 <https://cre-stride.org/>

✂ @CRE_STRIDE



CRE-STRIDE