



IRL (In Real Life)

Elevating the role of real-life stories in a government trial

Our Place proudly supports the Aboriginal and Torres Strait Islander Voice to Parliament being enshrined in the Australian Constitution.

We believe that the Voice will underpin stronger communities and a stronger nation and will be one of many important steps towards a better future.



ourplace
education is the key to the door



Please note

Images and names included in this presentation do not reflect the specific individuals referred to in our stories.



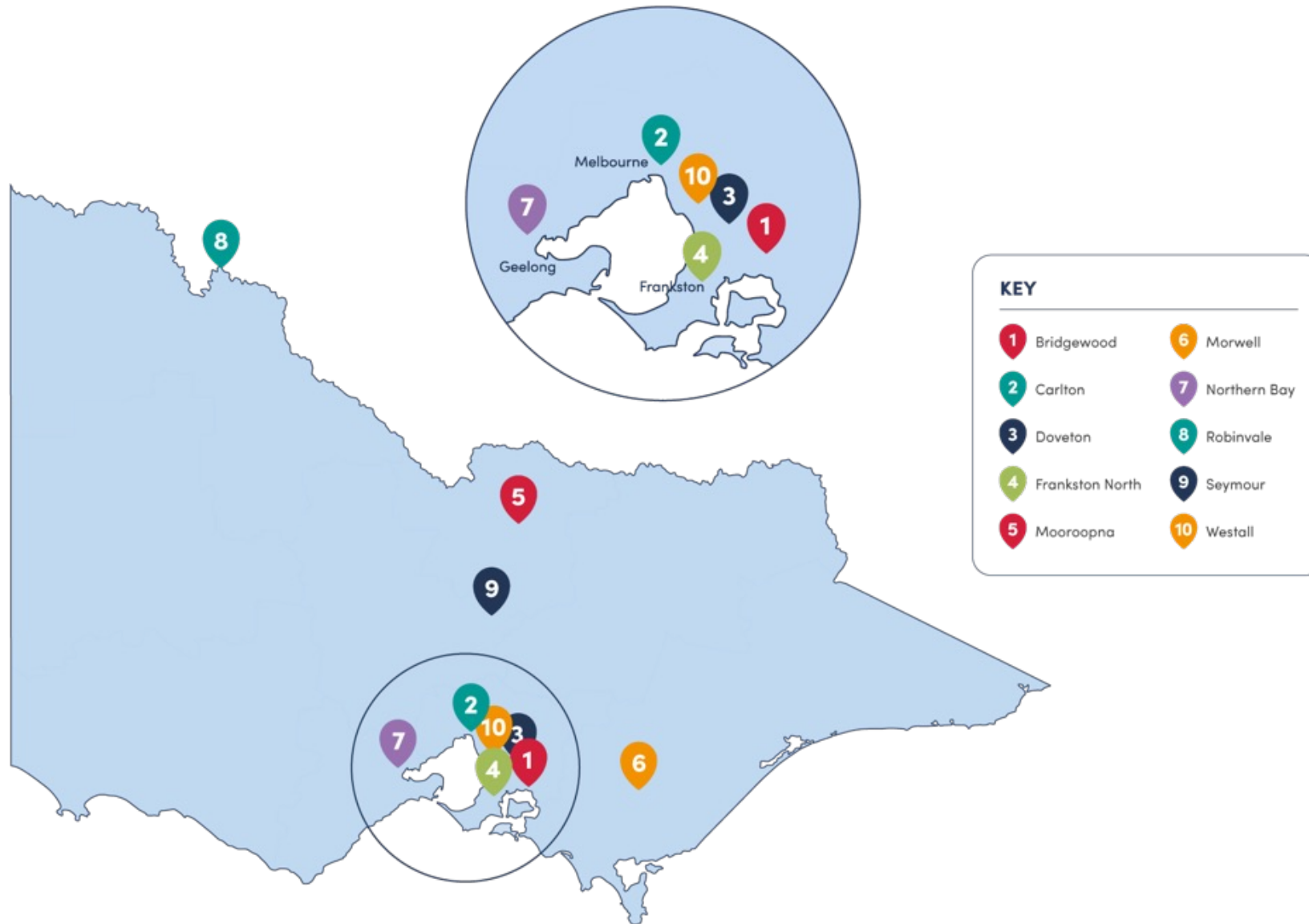




The Our Place approach



Located in 10 sites across the state of Victoria



Four key components to our work



PEOPLE:
Community
relationships &
engagement



PLACE:
Space and
infrastructure



PURPOSE:
Collaborative
governance



KNOWLEDGE:
Data-informed
decisions

We call this 'the Glue'

To save precious time
in this presentation,
we'll just call it "Early
Help"!

Early Help is a part of state government reforms

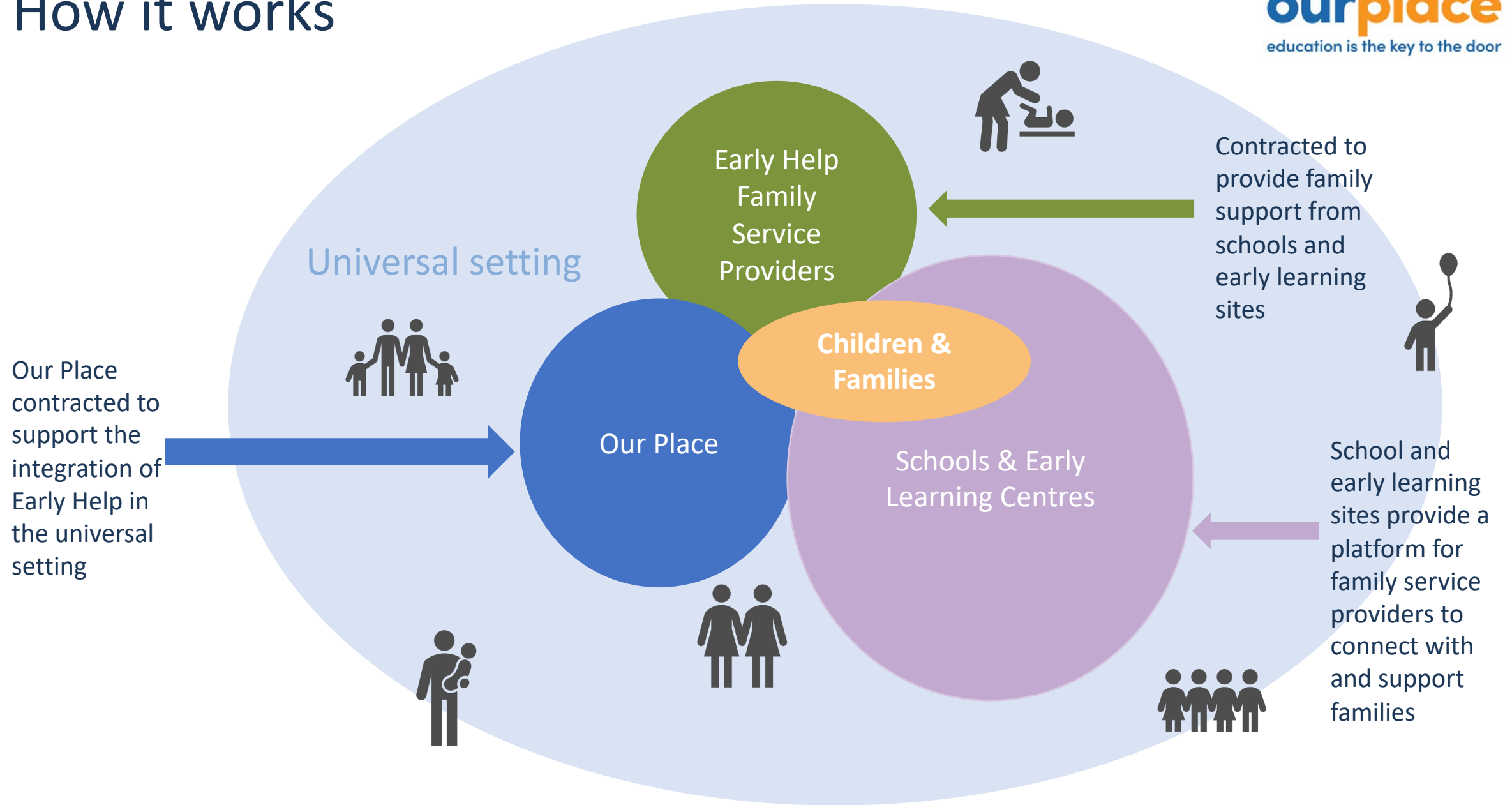
Roadmap for Reform: Strong Families, Safe Children

Roadmap for Reform: Strong Families, Safe Children is our strategy to transform the child and family system.





How it works





ourplace
education is the key to the door

Early Help Case Study

Early Help is a trial initiative that brings community support agencies together with universal services to provide support to families with emerging needs. Led by the Department of Families Fairness and Housing, Early Help operates at two Our Place sites, providing a unique platform for family engagement.

Stories are a powerful way in which to build a picture of what Early Help looks and feels like on the ground. Using Most Significant Change methodology, Our Place is capturing the perspectives of those charged with the implementation of Early Help and those families Early Help is reaching out to. Early Help stories consider changes to professional practice and the local service system (ways of working); how Early Help is being implemented in Our Place settings; and the experiences of families engaged in Early Help activities and supports.

JUST ACROSS THE CORRIDOR

The Our Place office sits opposite the Maternal Child Health (MCH) consulting rooms, at Koryan Biralee, with the early childhood centre a little further down the corridor. Each day the Our Place staff see families coming and going and pause for chats along with the MCH nurses and early childhood workers.

It was a rainy Tuesday when the MCH nurse popped out of her consult room and into the Our Place office for a quick chat with an Our Place Community Facilitator. The MCH nurse was in the midst of a consultation with a Mum, Julie* and her young 4-month-old. She felt Julie might benefit from some of the other supports available at Koryan Biralee and knew that the Our Place Community Facilitator would be able to assist.

With Julie's permission, the MCH nurse brought Julie across the corridor, introducing her to the Our Place Community Facilitator. Having a sense of Julie's situation, gained through the MCH nurse, the Our Place Community Facilitator chatted with Julie about Story Time. Story Time, held in the Our Place community lounge, is a free weekly session for parents and children with guests from across the Our Place site coming to read stories aloud.

Over the weeks, however, through the support of the attentive Early Help Practitioner, Julie became increasingly comfortable at playgroup. She has begun to open up about some of the other challenges she faces, allowing the Early Help Practitioner the opportunity to share information about other supports such as family counselling.

By having various services and activities on the one site, the MCH Nurse and the Our Place and Early Help teams have been able to work together to support this mum through warm referrals just across the corridor.

*Names have been changed to protect the privacy of individuals and their families

INSIGHTS

This story demonstrates how Early Help at Our Place has contributed to building parent confidence and increased social and community connection for this family. Pre-existing relationships between onsite services and Our Place teams support family engagement, through warm referral, in Early Help activities, enabling local, place-based, family-centred approaches that support families who may not otherwise engage in service support.

The 'Most Significant Change' (MSC) Technique

A Guide to Its Use

by

Rick Davies and Jess Dart



*“It’s been nice to have somewhere to go and know the people each week.... It is the support that is **the difference**. I can’t imagine what it would have been like to not have had that. **It’s been really helpful**. Its hard to put into words”.*

Early Help at Our Place parent

*“I used to sleep for only two hours for three years because [my son] used to cry ... I was so into depression ... now he is sleeping completely ...**it was a big big big relief for me”***

Early Help at Our Place parent

*“When I came here [to Australia] I was so fearful, worried about being judged. If I was to meet myself a year ago, **I would not recognise myself”***

Early Help at Our Place parent



ourplace
education is the key to the door





Baby College



**Come and join us at
Korayn Birralelee Family Centre**

B **Baby College** brings women who are pregnant in their third trimester or have a child less than 6 months old, together to support the journey of parenting. Baby College is open to women over 25 years and first-time pregnancy is not a requirement.

The program aims to:

- Enhance parent and child attachment.
- Increase understanding of child development.

Please come and join us for fun, learning and friendship.

BABY COLLEGE

| | |
|----------|--|
| LOCATION | Korayn Birralelee Family Centre, 146 - 152 Purnell Road, Corio |
| DAY/TIME | Wednesdays 1:30pm-3:30pm Group runs during school terms |
| CONTACT | Please call: Hari on 0417 868 521 Theresa on 0491 090 606 Or email: Earlyhelp@bethany.org.au |
| COST | Free |

Baby College is facilitated by BCYF and Bethany in partnership with Our Place and Korayn Birralelee Family Centre.



If you would like to know more – please come and see us in the break following this session.

Or find us at www.ourplace.org.au