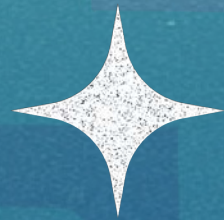


He Whetu Arataki



Gill Potaka-Osborne, Teresa Taylor, Dr Tanya Allport,
Senior Researchers, Whakauae Research





Rātā Marae
Rātā, Rāngitīkei

Aotearoa New Zealand

Our home: The
Rangitīkei

Rātā Marae, Rangitīkei





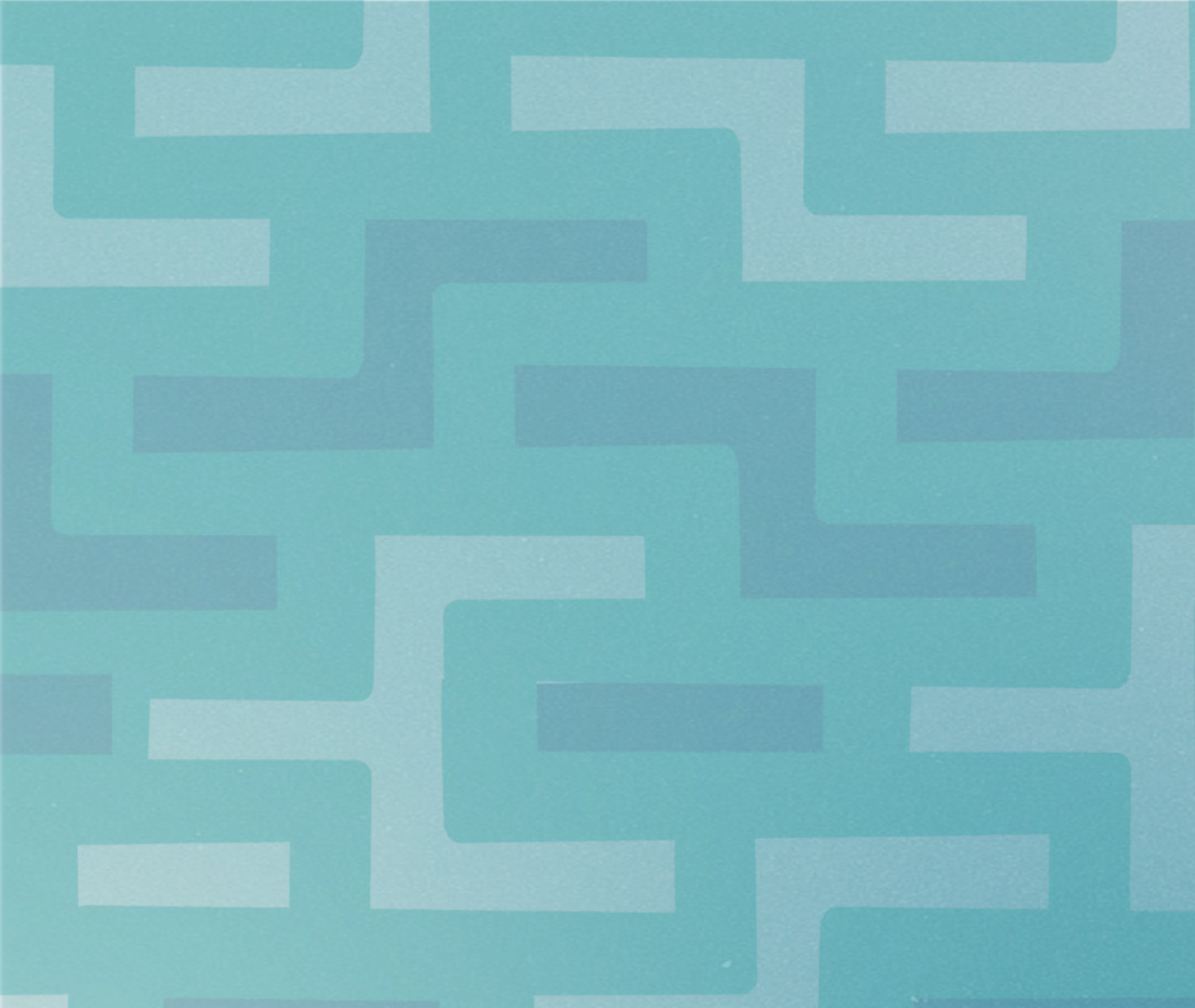
He Whetu Arataki
participants – the
early days



He Whetu Arataki



He Whetu Arataki



He Whetu Arataki

Kaupapa Māori

"Kaupapa Māori research and evaluation is done by Māori, with Māori and for Māori. It is informed by tikanga Māori, or Māori ways of doing things.

✦ Researchers and service providers working with Māori need to acknowledge Māori ways of being and perspectives in their work."

<https://whatworks.org.nz>

Iwi-centered methodologies: reclaiming authenticity

- The iwi (Ngāti Hauiti) inform the evaluation aims and approach
- The evaluation approach values the strength of the iwi
- The evaluation approach honours and reinforces the mana (authority) of the iwi and the people
- The evaluation practice has an intentional engagement process that is led by the iwi and iwi cultural values
- The evaluation design and practice is imbued in the grounding of whakapapa – meaning we see relationships in light of individual ancestry forming collective relationships
- The evaluation methodology and process acknowledges the interconnectedness between past, present and future, but also encapsulates Whakaaro a mua: thinking with our mokopuna (descendants) in mind



W H A K A U A E
Research for Māori Health and Development



Ngā mihi



Check out our website
www.whakauae.co.nz