

The whole box and dice

Approaches for dealing with complexity in a wellbeing budgeting and outcomes funding environment

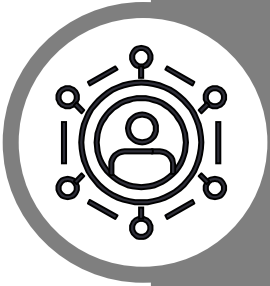
AES Conference
Sydney
18 September 2019

■ ■ ■ ■
The better the question. The better the answer.
The better the world works.



EY
Building a better
working world

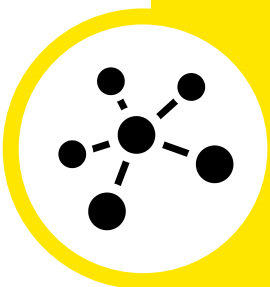
Introduction



Shift towards **cross-government and cross-sector approaches** to program design and program delivery, the sector being **incentivised to innovate to achieve outcomes.**

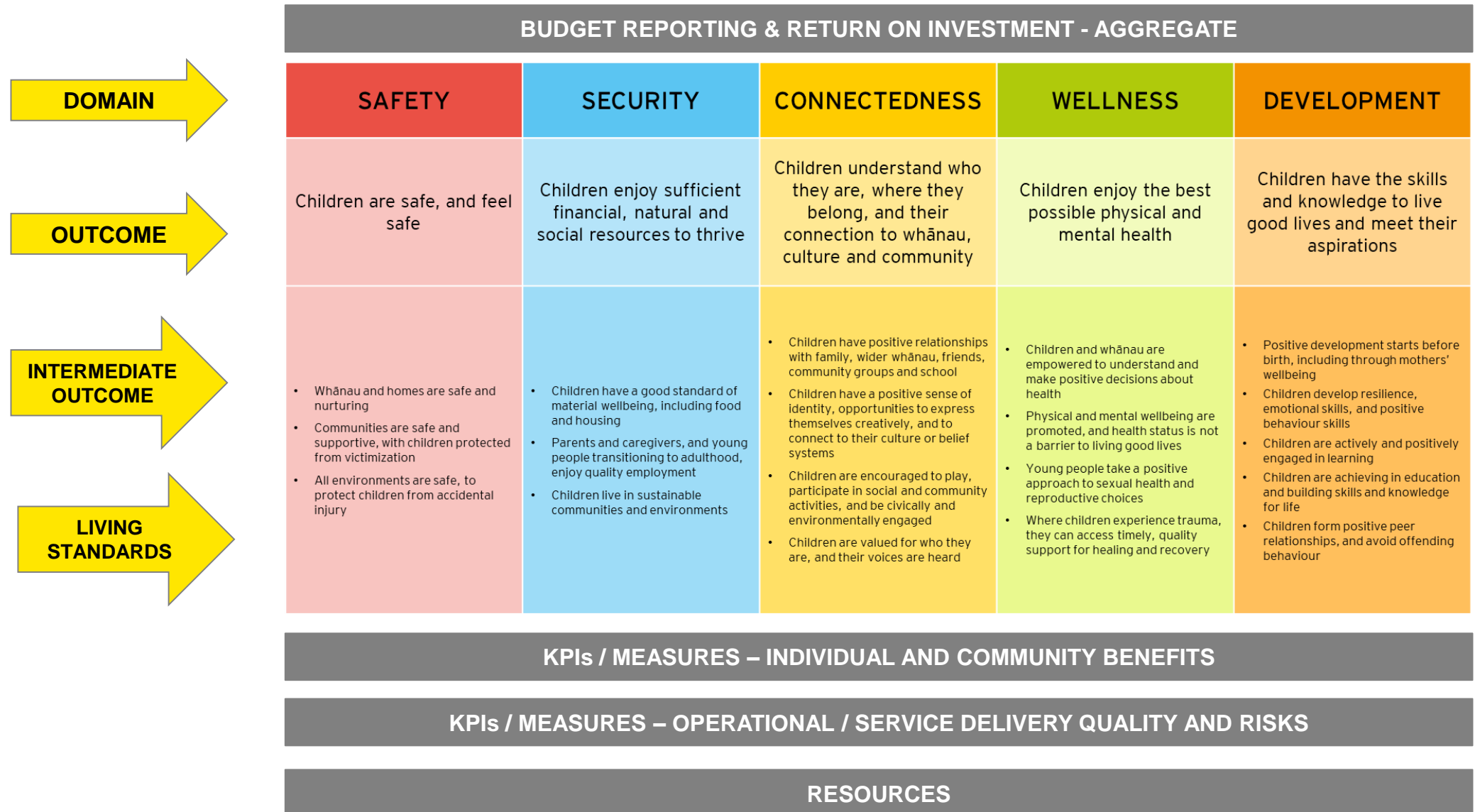


So, what does this mean for evaluation and program performance management?



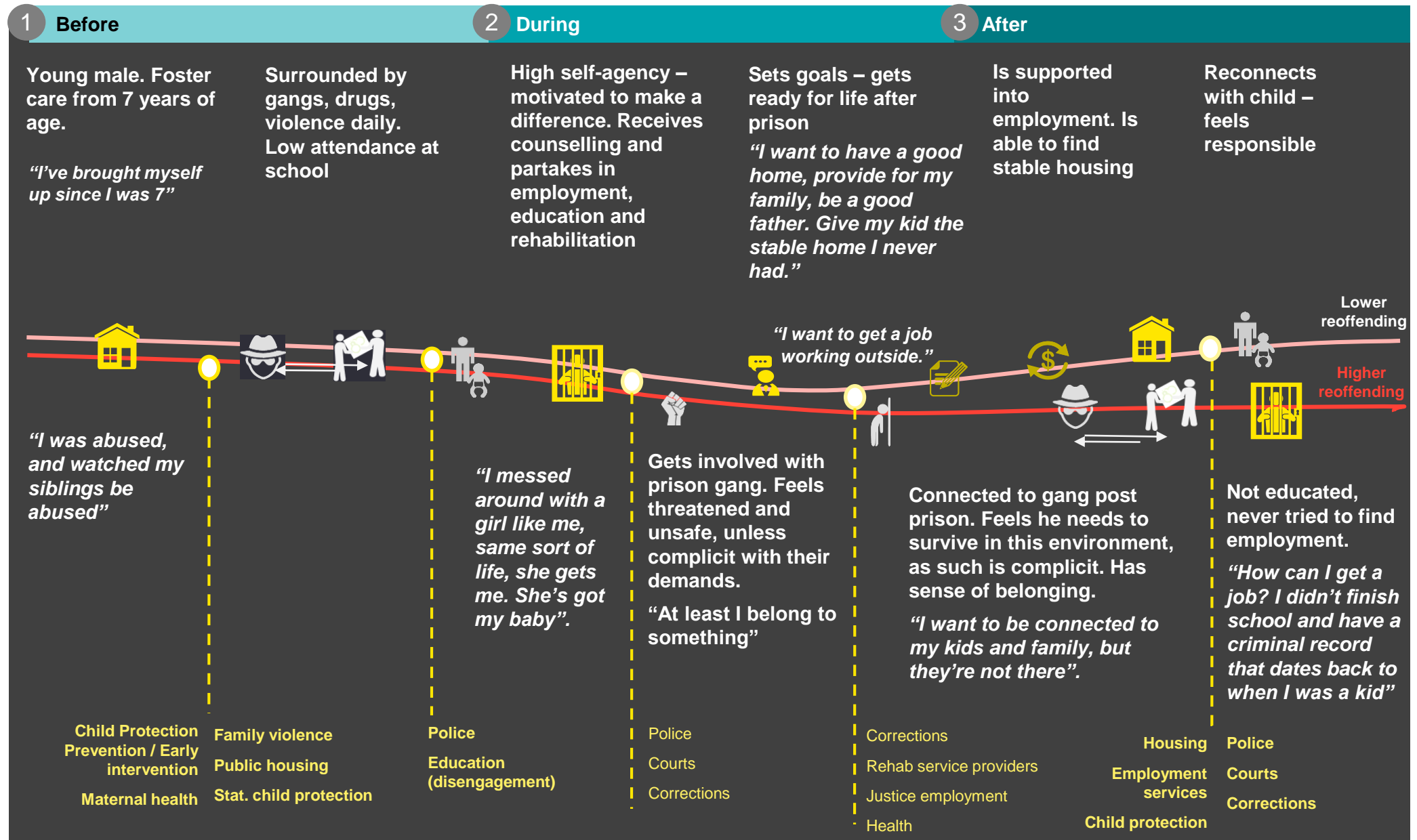
- 1. Need to understand the ecosystem of 'wellbeing'**
- 2. Evaluation methods for complexity and uncertainty**

Example 1: Wellbeing Construct - New Zealand



Example 1 continued:

When evaluating a program, environmental variables must be considered



Example 2: Improvement Evaluation Methodologies - NSW Adoptions

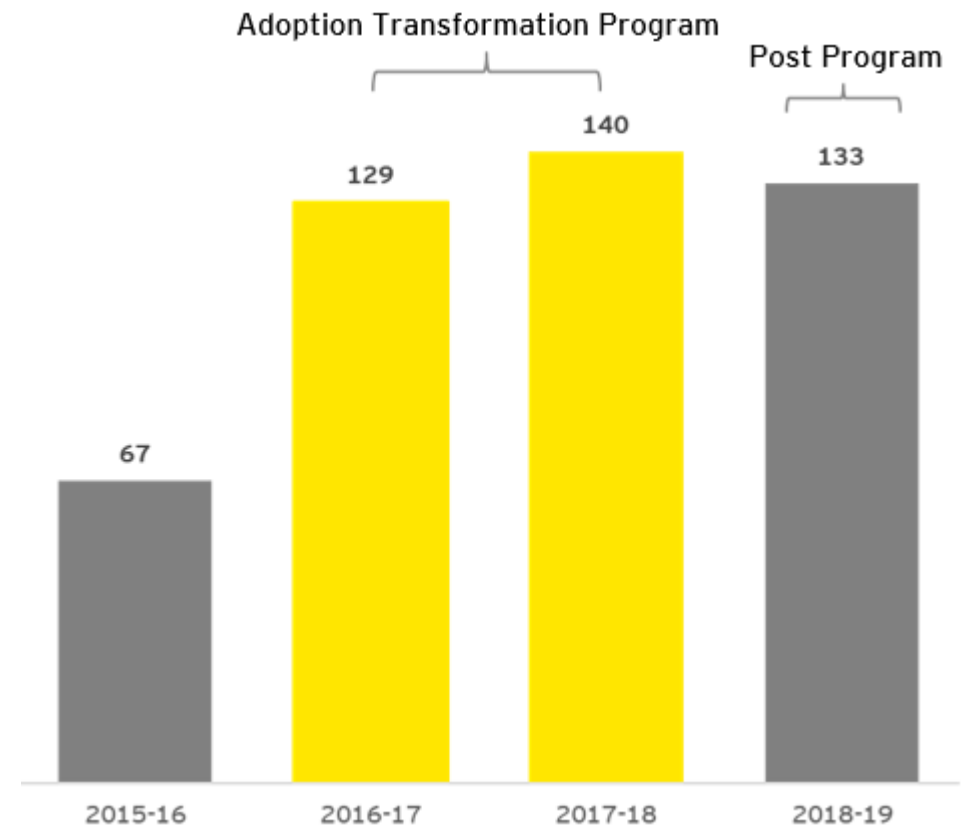
Continue to adapt intervention during implementation and beyond

Intensive monitoring and evaluation required to optimise intervention and client benefits

Investment in intervention optimisation, not up-front design



Example from NSW Adoptions from Foster Care



To move the needle on outcomes, we need to...

Implement frameworks through a wellbeing lens, which link to living standards, life outcomes and short and longer term budget priorities

Wellbeing is multidimensional, distributed over groups, and distributed over time. Therefore, evaluation must consider

- **the broader ecosystem, i.e., the multiple agents responsible for working together to achieve better wellbeing, and importantly**
- **must consider the environmental variables.**

Greater use of developmental methodologies suited for more complex and uncertain service delivery environments

Developmental evaluation helps to generate rapid learning to support the direction of the development of a program.

Mark Galvin, Partner

Oceania Evaluation Practice Lead

+61 422 009 718

mark.galvin@au.ey.com

Alain Nader, Senior Manager

Government & Public Sector

+61 408 635 020

alain.nader@au.ey.com

