

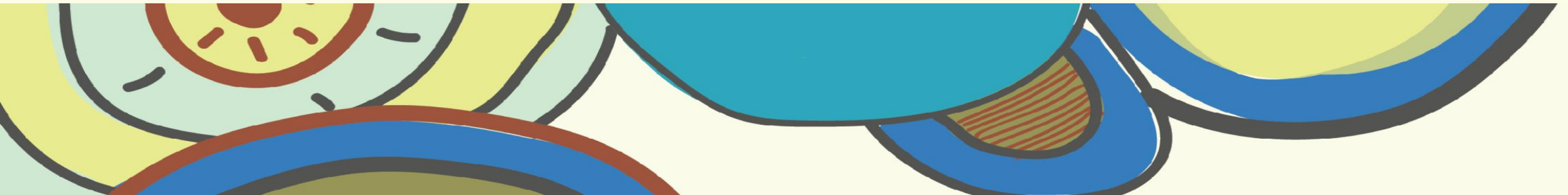
Co-designing a place-based evaluation



AES19

16-18 September 2019 Sydney

Roxanne Bainbridge (Central Queensland University), **Robyn Bailey** (Allen + Clarke), **Julia Carr** (Griffith University), **Robert Monaghan** (Monaghan Dreaming), **Ned Hardie-Boys** (Allen + Clarke)



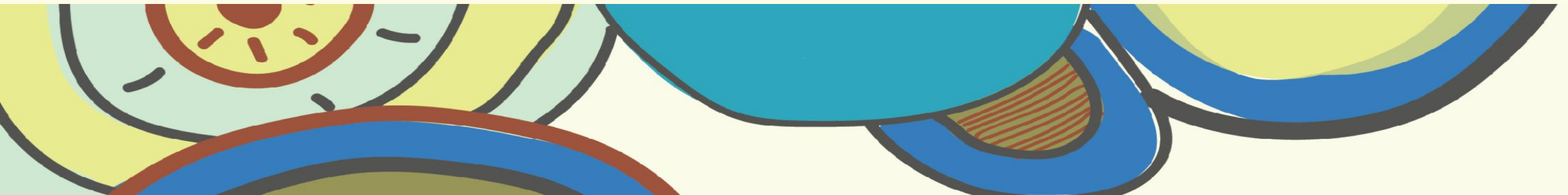
Overview

- **Definition**
- **Significance**
- **Aim**
- **Case example**
- **Summary**

Place-based approaches are....

- “...collaborative, long-term approaches to build thriving communities delivered in a defined geographic location
- “...characterised by partnering and shared design, shared stewardship, and shared accountability for outcomes and impacts”
- “...used to respond to complex, interrelated or challenging issues – e.g. complex social issues – ‘wicked problems’

Framework for Place-Based Approaches, Department of Communities, Disability Services and Seniors
<https://www.communities.qld.gov.au/industry-partners/place-based-approaches>



Significance of placed-based approaches

- **Social change**
- **Complex community needs**
- **Community decision-making and responses**
- **Community priorities**
- **Community control**

Aims of a placed-based approach

- **Community engagement and participation**
- **Community capacity and social infrastructure**
- **Devolution to the local level**
- **Strategic, targeted solutions**
- **Cross-sector collaboration**

Case example

Indigenous PHC services,
including comprehensive PHC

PRIMARY HEALTH
CARE (PHC) SERVICES

Indigenous Australians'
Health Programme (IAHP)

Australian Nurse Family Partnership Program
Indigenous Rheumatic Fever Strategy
Tackling Indigenous Smoking Program
Bowel Cancer Screening
Mental and social health,
drug and alcohol use in PHC
Eye Health
Oral Health
Ear Health

TARGETED
HEALTH
ACTIVITIES

Remote Area Health Corps

Integrated Team Care

Medical Outreach Indigenous
Chronic Disease Program

PBS Co-payment

IMPROVING ACCESS
TO PHC SERVICES

CAPITAL WORKS

Service maintenance
Staff accommodation

Clinic refurbishment
Infrastructure

GOVERNANCE &
SYSTEM EFFECTIVENESS

Monitoring and evaluation

Indigenous Remote Service
Delivery Traineeship

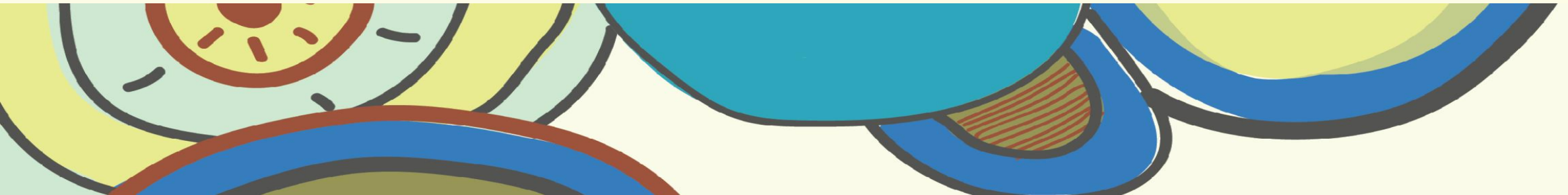
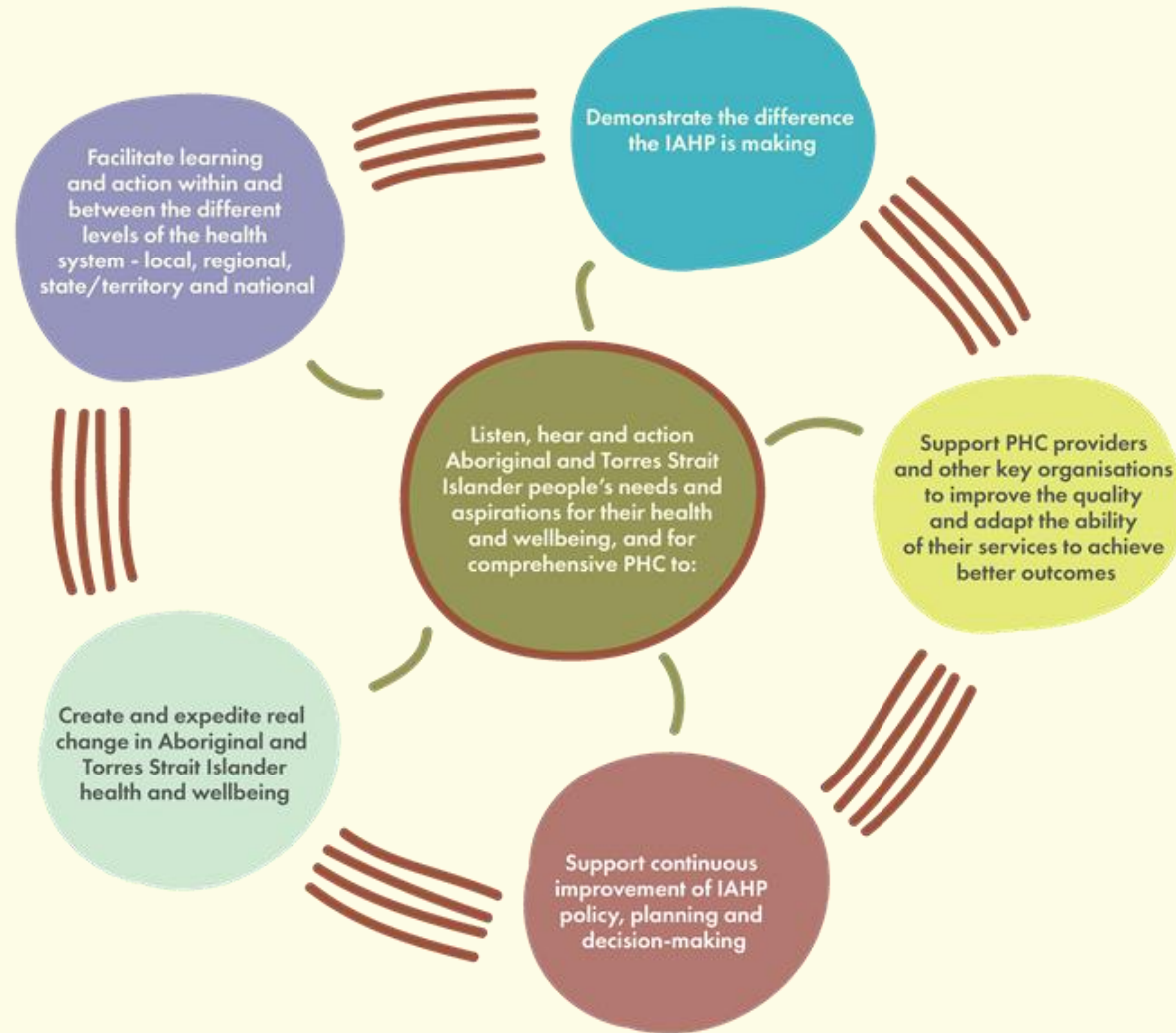
Peak body funding to NACCHO and affiliates

Regionalisation (transition
to community control in NT only)

Evaluation of the Government's investment in Indigenous PHC through the IAHP

This diagram aims to provide a general overview of the IAHP by identifying broad programs and activities funded. This is not an exhaustive list and is subject to change.
For further information, see the IAHP Guidelines at <http://www1.health.gov.au/internet/main/publishing.nsf/Content/indigenous-programme-lp>

IAHP Evaluation Aims



Features of place-based approaches



Agreed place



Community engagement



Shared vision and commitment to outcomes



Local collaborative governance

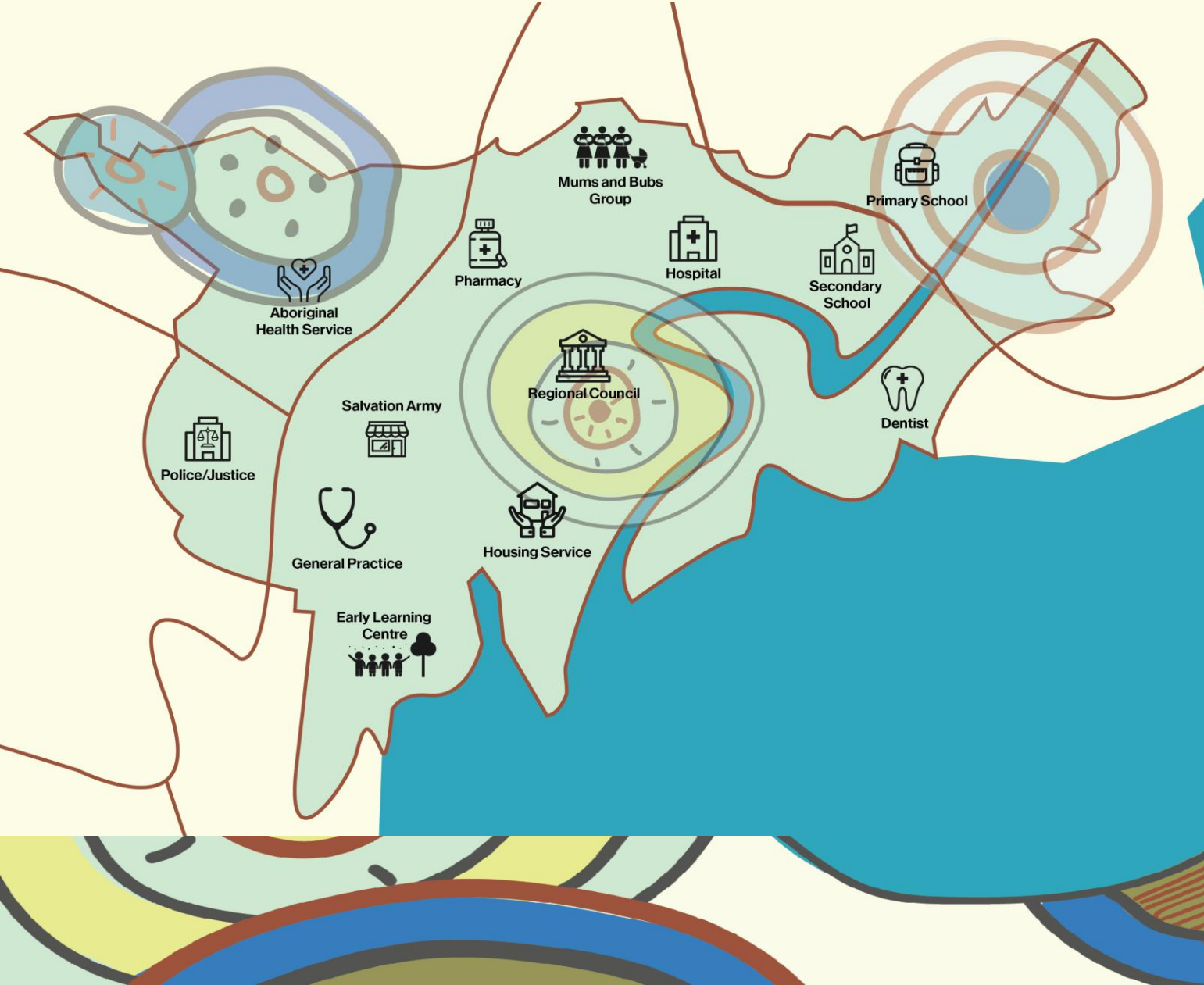


Working together



A cycle of integrated learning

Agreed place[s]



- Many places/levels, rural, remote, urban
- 16 -20 geographical sites
- Centres of meaning constructed out of lived experience
- Variation in engagement intensity - collaboratives
- Engagement processes: Engagement Leads; LECs

The background of the slide features a series of thin, curved lines in shades of grey and blue, creating a sense of motion and depth. These lines are more prominent on the left side and fade towards the right.

Shared vision & commitment to outcomes

- **Co-design at multiple levels**
- **Engagement**
- **Collective impact**
- **CQI approach**
- **Shared measurement systems**

Working Together

- Co-design at multiple levels
- Collaborative approach
- Systems approach
- Thinking innovation

****How well systems are working - NOT** an evaluation of the performance of particular IAHP programs or of organisations that provide PHC services to Aboriginal and Torres Strait Islander people.

Community engagement

Genuine engagement

- Aboriginal engagement leads
- Engaging appropriately
- Local people, groups and community-based organisations

Local collaborative governance

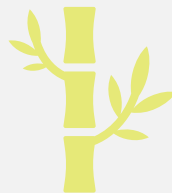


**Collaborative, locally-led
governance**



**Working
differently:**

- Systems approach
- Grounded emergent approach
- Action learning model



**Working
together:**

- PDSA cycles
- Meaningful local involvement

A cycle of integrated learnings



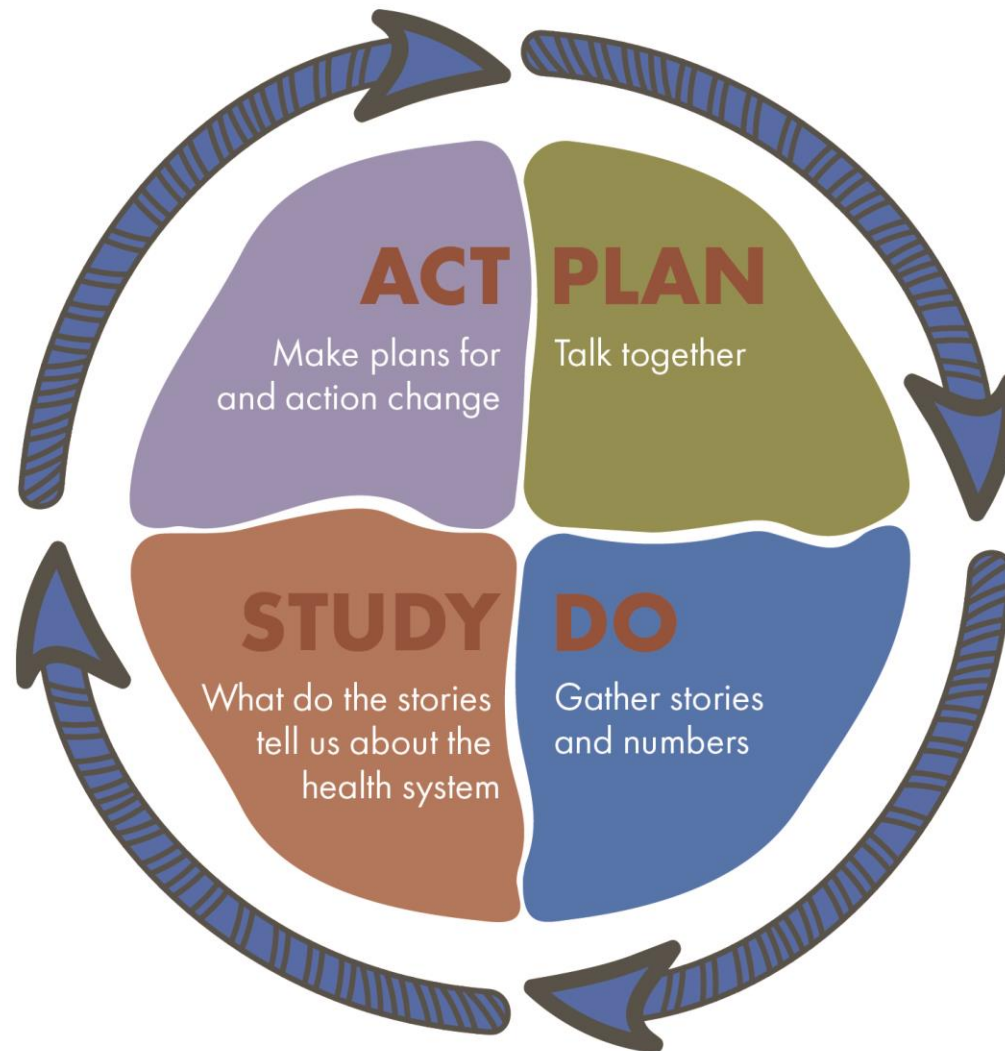
Commitment to being informed by data, research and story



Cycle of continuous learning, improvement and points of reflection embedded throughout the practice.



Strong focus on evidence-based practice, and a commitment to constantly reviewing the approach to ensure it is effective, flexible and adapted to the needs of place



Summary of place-based approaches



Focusses on the local level



Creates a shared, long-term vision and commitment to outcomes



Involves working differently together across the community



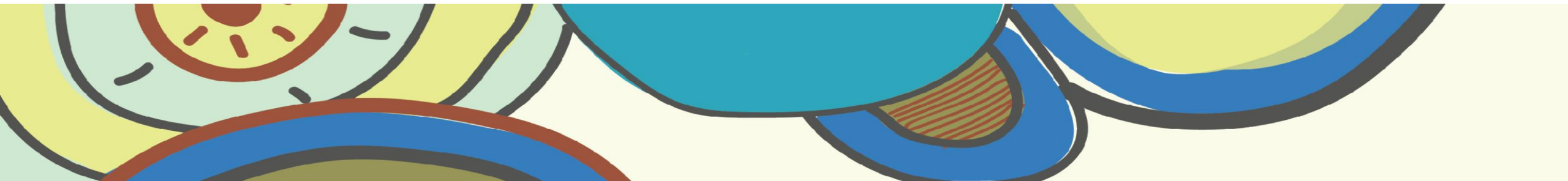
Creates governance at a local level



Embeds broad engagement with the community



Gives opportunity to experiment, prototype, and learn through doing





THANK YOU!