



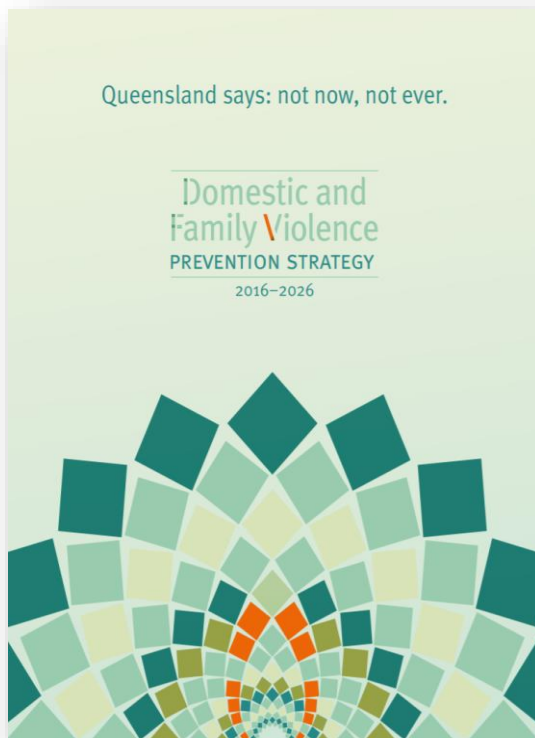
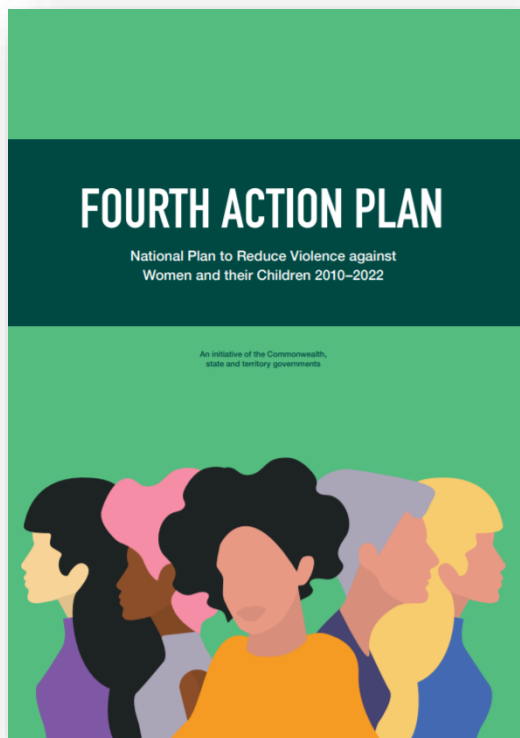
The Perpetrator Perspective: Breaking down the barriers in family violence research and evaluation

AES Conference 2019

Luke Condon, Karen Kellard, Jenny Anderson

Context

Policy focus on family violence, including holding perpetrators to account, has created an imperative to evaluate perpetrator programs



Context

Today's presentation will draw on our experience evaluating perpetrator case management and cohort intervention trials in Victoria to share learnings on evaluating perpetrator interventions and incorporating the user perspective



Evaluation commissioner



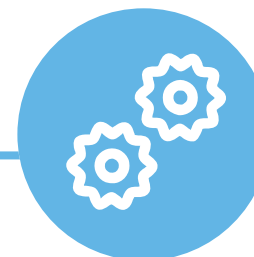
Evaluation provider

Deloitte
Access **Economics**



Social
Research
Centre

An ANU Enterprise business



Program providers

24 case management providers

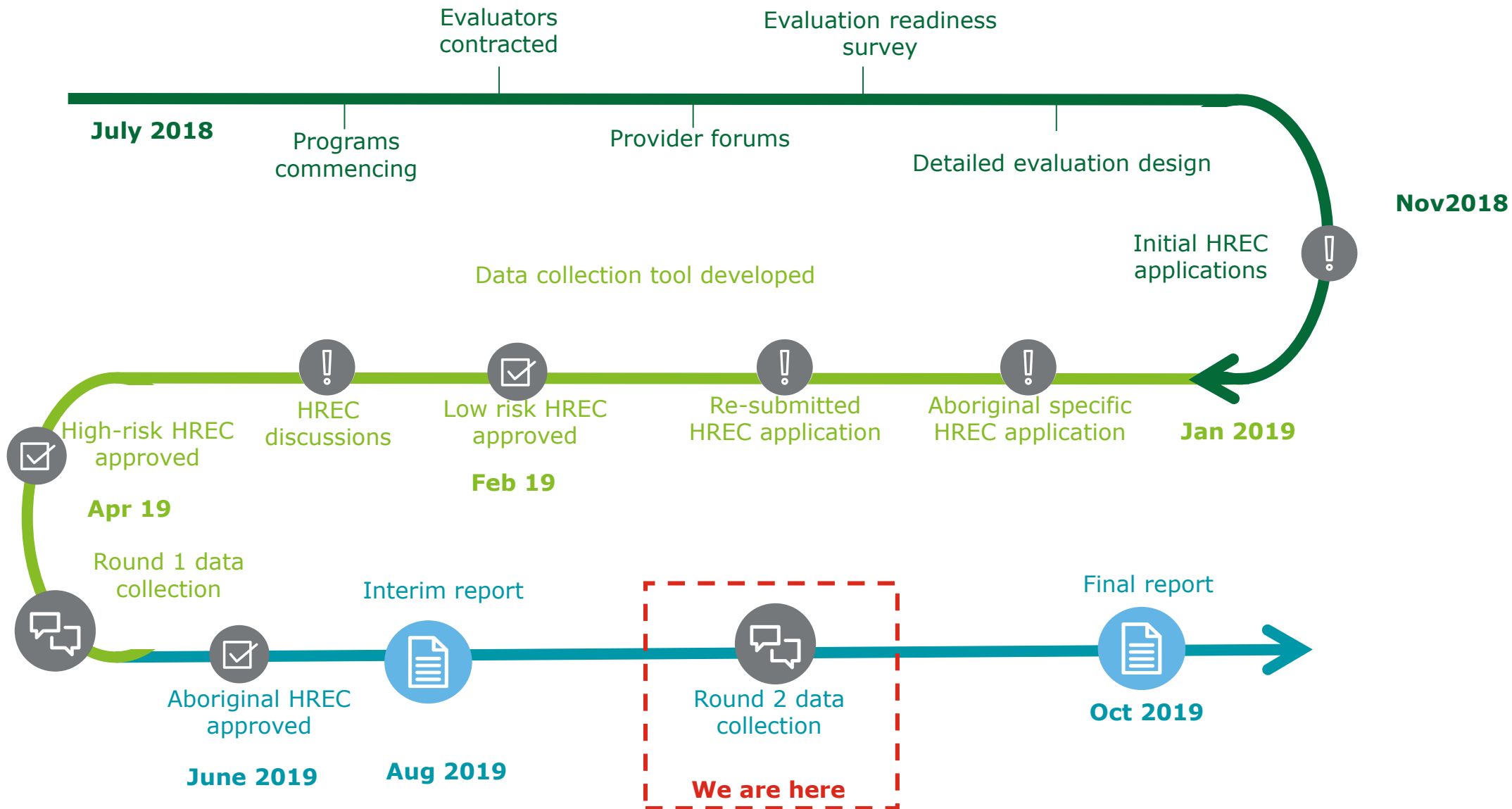
- One-on-one tailored support (including brokerage)

Seven cohort trials

- New programs targeted at people who use violence from CALD, LGBTIQ, women who use force, Aboriginal communities and people with cognitive impairment

The journey

The evaluation commenced in July 2018 and is due to conclude in October 2019



Barriers encountered

The evaluation planning process prior to data collection was lengthy and included the following barriers:

Provider readiness

Providers do not view monitoring and evaluation as a priority in the early phase of program delivery

Data challenges

There was limited consistent and fit for purpose monitoring data being collected by providers

Diversity within diversity

The wide diversity of groups targeted by the programs required bespoke tailoring in recruitment and field work

Ethics, rigour and safety

Accessing participants (perpetrators and victims) appropriately for ethics – including safety and research design

Solutions applied in this evaluation

However, working collaboratively, we have been able to overcome these barriers and the evaluation is proceeding well.

Provider readiness

Providers do not view monitoring and evaluation as a priority in the early phase of program delivery

- Co-designed evaluation planning
- Established evaluation principles
- Undertook evaluation readiness survey

Data challenges

There was limited consistent and fit for purpose monitoring data being collected by providers

- Developed a bespoke data collection tool
- Aligned data collection to the Family Violence Outcomes Framework
- Provided data training workshops to providers

Diversity within diversity

The wide diversity of groups targeted by the programs required bespoke tailoring in recruitment and field work

- Developed a specific approach for each cohort
- Involved providers as genuine evaluation partners, recognising their cohort expertise
- Developed a language guide

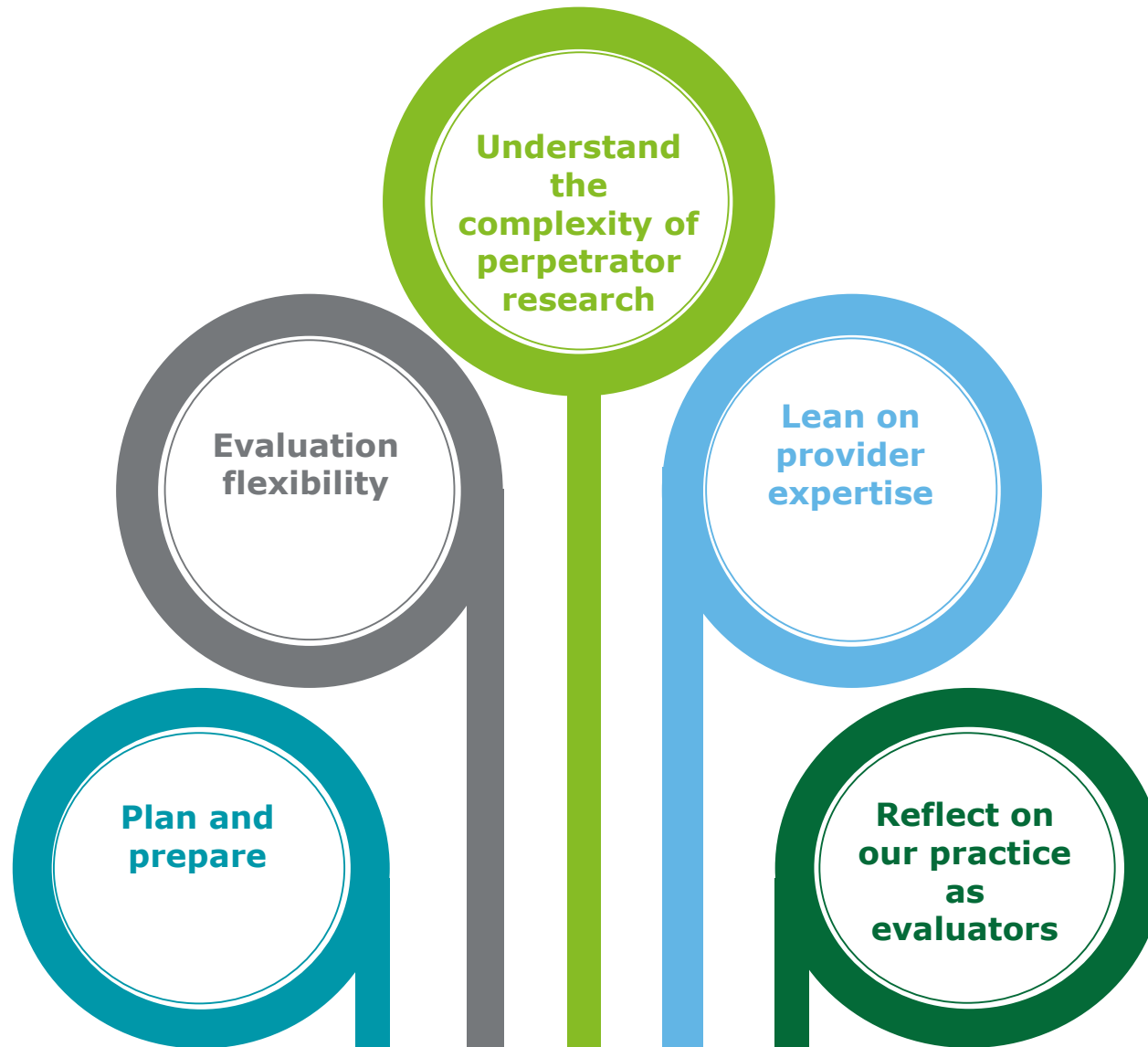
Ethics, rigour and safety

Accessing participants (perpetrators and victims) appropriately, considering both safety and research design

- Deployed a range of safety measures
- Developed risk management plan acknowledging role of provider
- Incorporated provider expertise on safety and collusion
- Researchers undertook training on identifying collusion

Lessons and applicability

Lessons from this evaluation experience can be applied elsewhere





Deloitte Access Economics is Australia's pre-eminent economics advisory practice and a member of Deloitte's global economics group. For more information, please visit our website: www.deloitte.com/au/deloitte-access-economics

Deloitte refers to one or more of Deloitte Touche Tohmatsu Limited ("DTTL"), its global network of member firms, and their related entities. DTTL (also referred to as "Deloitte Global") and each of its member firms and their affiliated entities are legally separate and independent entities. DTTL does not provide services to clients. Please see www.deloitte.com/about to learn more.

Deloitte is a leading global provider of audit and assurance, consulting, financial advisory, risk advisory, tax and related services. Our network of member firms in more than 150 countries and territories serves four out of five Fortune Global 500® companies. Learn how Deloitte's approximately 286,000 people make an impact that matters at www.deloitte.com.

Deloitte Asia Pacific

Deloitte Asia Pacific Limited is a company limited by guarantee and a member firm of DTTL. Members of Deloitte Asia Pacific Limited and their related entities provide services in Australia, Brunei Darussalam, Cambodia, East Timor, Federated States of Micronesia, Guam, Indonesia, Japan, Laos, Malaysia, Mongolia, Myanmar, New Zealand, Palau, Papua New Guinea, Singapore, Thailand, The Marshall Islands, The Northern Mariana Islands, The People's Republic of China (incl. Hong Kong SAR and Macau SAR), The Philippines and Vietnam, in each of which operations are conducted by separate and independent legal entities.

Deloitte Australia

In Australia, the Deloitte Network member is the Australian partnership of Deloitte Touche Tohmatsu. As one of Australia's leading professional services firms, Deloitte Touche Tohmatsu and its affiliates provide audit, tax, consulting, and financial advisory services through approximately 8000 people across the country. Focused on the creation of value and growth, and known as an employer of choice for innovative human resources programs, we are dedicated to helping our clients and our people excel. For more information, please visit our web site at <https://www2.deloitte.com/au/en.html>.

Liability limited by a scheme approved under Professional Standards Legislation.
Member of Deloitte Asia Pacific Limited and the Deloitte Network.

©2019 Deloitte Access Economics. Deloitte Touche Tohmatsu