

Repurposing substantive theories in evaluation:



Opportunities and risks in transferring formal theories into new domains

Kim Grey

Masters student, University of Melbourne

Gill Westhorp

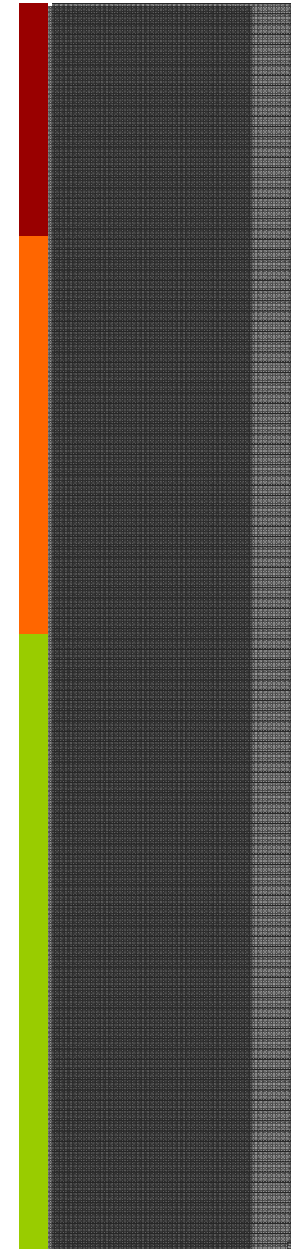
Charles Darwin University

AES 2017

Disclaimer: the views expressed are those of the authors

Contents

1. Origins of this question
 - The value of sharing theories
 - What does the literature say
2. Examples
 - Ours – from layers of the social system
 - Yours – breakout groups
3. Stock take – views from the room
 - Opportunities and risks
4. Summary of potential



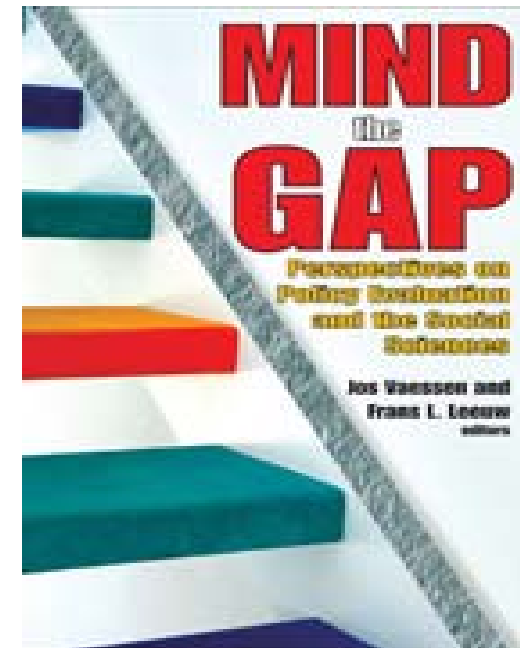
Explicitly sharing experience in transferring theories and evidence

obtained about the extension of a formal theory to a new context

has potential to advance the field of social policy evaluation.

- From *Mind the Gap*, by Vaessen & Leeuw (2010)

That is what we'll do today





Questions arising from this practice :

Do underlying evidence based theories about human behaviour *automatically transfer* to new areas of behaviour or new levels of systems?

Is borrowing theories valid?

Mitchie and Abrahams (2004) describe interventions which repurpose theory without validity checks as evidence inspired rather than evidence based.



Theory

What do evaluators mean by 'theory'?

“what is meant by ‘theory’ encompasses a confusing mix of concepts related to ...

- how evaluation should be practiced,
- *explanatory frameworks for social phenomena drawn from social science, and*
- assumptions about how programs function and are supposed to function.”

(Donaldson and Lipsey, 2006, p. 57).

Defining theory...

A broad definition

'Theory' refers to how knowledge –

“organizes, categorizes, describes,

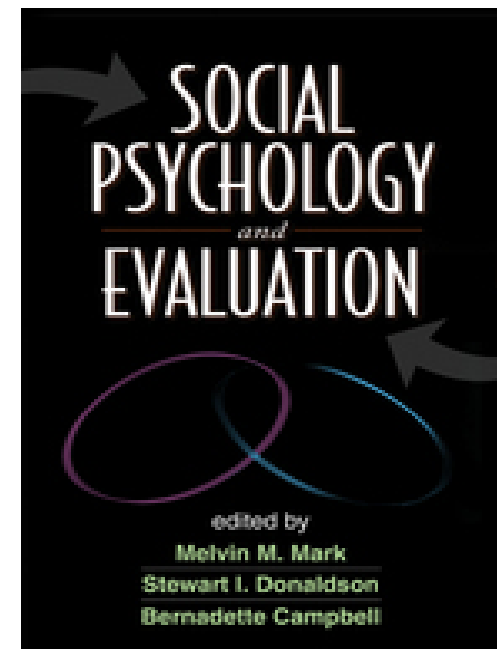
predicts, explains,

and otherwise aids in understanding and controlling a topic.”

(Shadish, Cook & Leviton, 1991, p. 30).

Defining theory...

- Formal or substantive theories relevant to evaluation of social programs arise in many fields
- Such as behavioural or social science, organisational theory, political economy and others.



Formal theory

➤ Theory ranges in meaning

➤ One definition of theory is that –

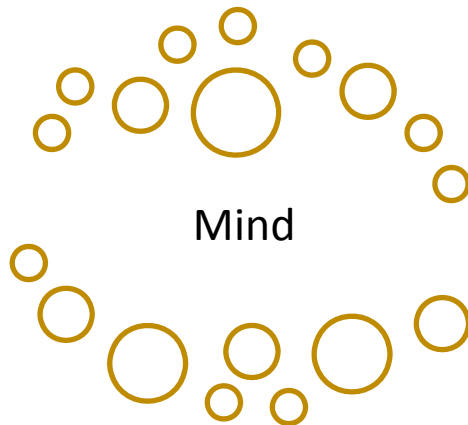
"a theory is a statement of the suspected relationship between and among variables"

(Gelso (2006), p. 2), in Gay & Weaver, 2011).

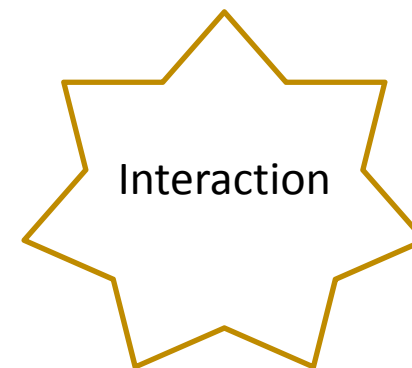
➤ In general, theory involves statements that make overt the relationships between concepts

Domains:

Mind ...cognitive, beliefs, thinking, emotion	Action ... choice, decision making, behaviour	Interaction ...engagement between partners in a system
--	--	--



Action



Domains – from Elster “Explaining social behaviour”

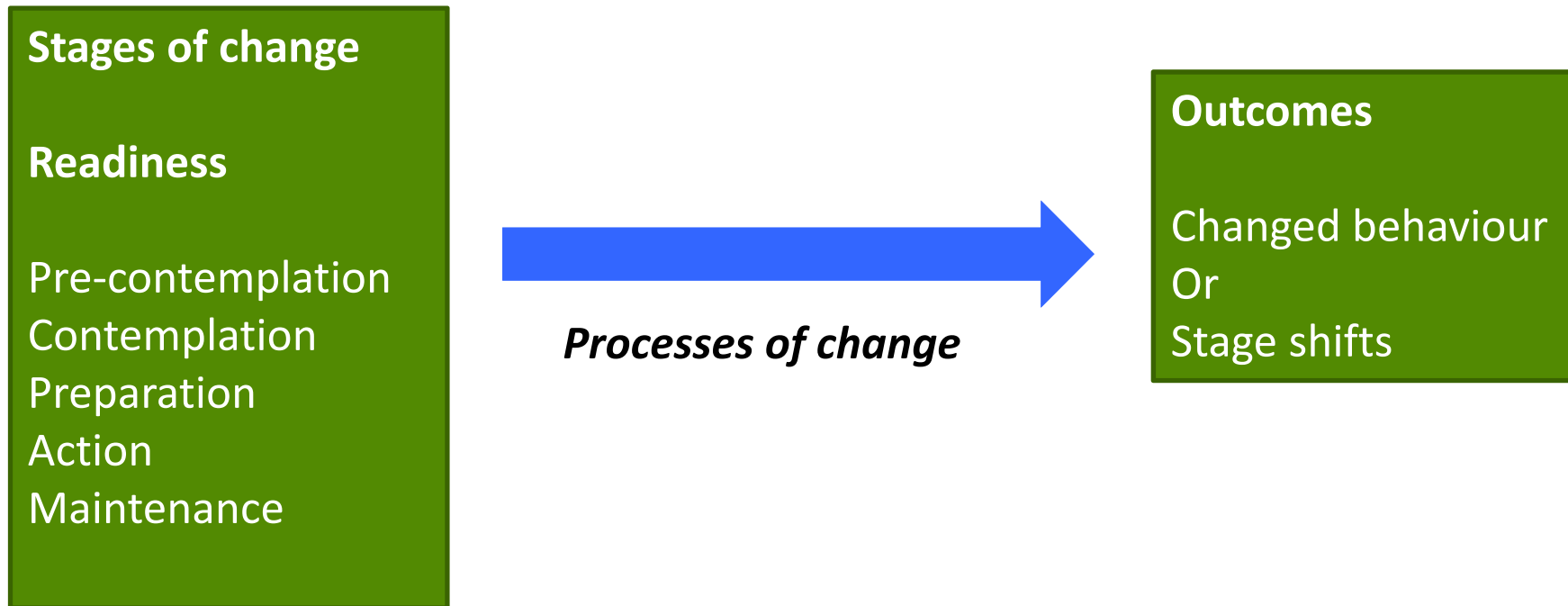
Examples

Theories spanning individuals, communities and service systems:

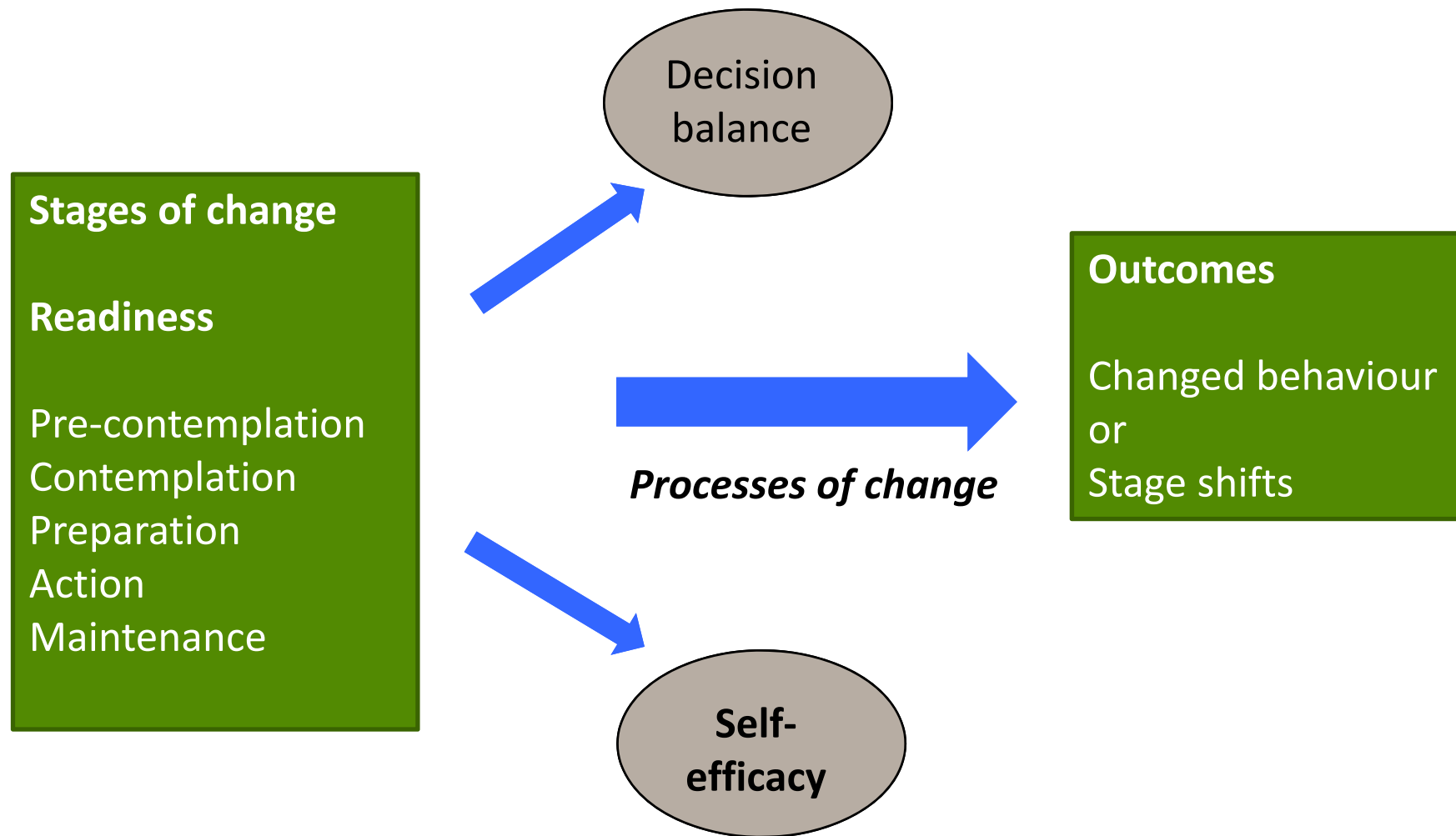
- Individual agency, e.g. self-efficacy
- Social change theories, e.g. collective efficacy
- Behaviour change theories, e.g. stages of readiness for change
- Service delivery, e.g. Normalisation theory

Stages of change theory

Prochaska & DiClemente



Stages of change theory – Trans-theoretical model



Normalisation theory

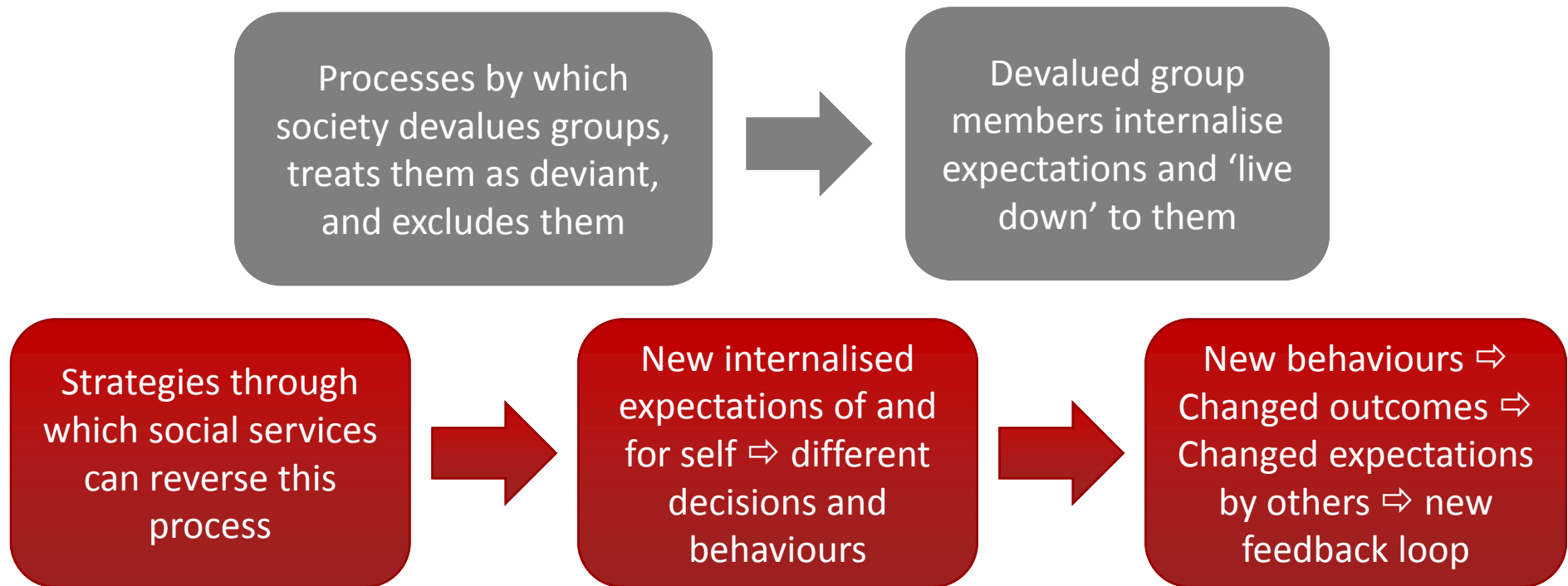
Wolfensberger and Tullman 1982

```
graph LR; A[Processes by which society devalues groups, treats them as deviant, and excludes them] --> B[Devalued group members internalise expectations and 'live down' to them];
```

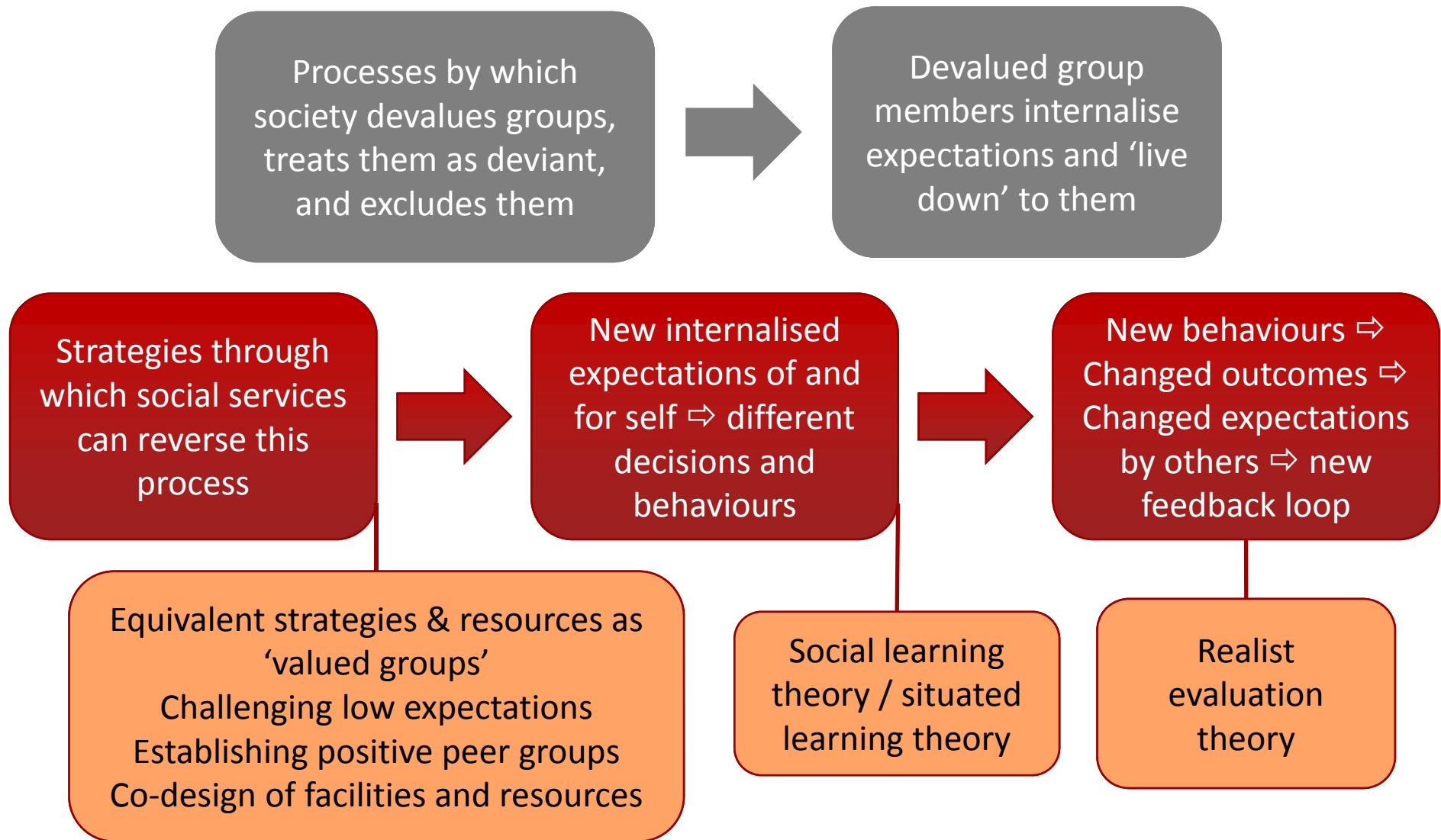
Processes by which society devalues groups, treats them as deviant, and excludes them

Devalued group members internalise expectations and 'live down' to them

Normalisation theory



Normalisation theory



Group breakout

Aim: to discuss the relevance of theories developed and tested in one sector, and their application in others

Prompt questions...

- What formal theories have you used?
Any you have decided not to use?
- What concerns have you had?
Pitfalls or risks?
- What benefits have you seen?
Any lessons?

Opportunities and risks

Summary of potential

Views from
the room



Stocktake

- Are all theories transferable – all of the time?
- What does this say about the utility of a theory?
- How can we know if we get it right? What happens if we mess it up?
- Should we engage in validity checks to build our evaluation capital?